

Pete and I am looked down a small hole near the
Steps ^{now} with a pot. A low crawl goes into
the hillside. Warrants another look with a smaller
person. (Probably drunk)

KEV. where?

14th July. I feel 'tis about time somebody from "the other place" wrote
something in here!! While Si, Kev etc. were galivanting off to some glorified
spring, others of us were actually wandering around the ^{2, 3, 4?} ruins. Stephen & F.
wandered up to Serrales Canto, looking for cave entrances. 11 or more were
found, in varying degrees of favorability. Two of which we hope to look
down tomorrow or the day after. Others were also being vagrant in the
ruins (more about that later). This took \approx 8+ hrs. ff

And now ... into the VOWELS OF THE EARTH:

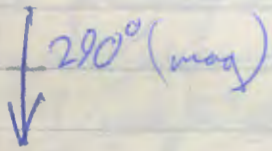
Same date as above (what ever that is (and who
cares)), we (John, Mike and I) visited the
Jove (something likethat) del Agua (to within the odd
vowel or two) to look for more cave entrances
but after finding many promising 'digs' we only
found one genuine, immediate entrance which
smelt strongly of some smoked food substance
and the main passageway (littered with
paper bags, bootmarks, gas canisters etc (possibly
had been discovered before)) was ended by an iron
door (locked) but could be climbed over. Mist then
fell quickly and we decided to slowly make track
for home. Had dinner and then came up to the bus
(where I am now) and got hammered into the ground
and wrote this piece

* see overleaf Graham 2 1/2 / 10
/ take a 1st in P

I've never heard of this

Saturday 11th, Dave.

After the morning shopping (and without of lunch!) I went searching for cave entrances on the plateau above Ora. I didn't have a lamp so I apologize in advance for "any finds" that turn out to be nothing much. Plan of discoveries follows; Investigative on Sunday.



* Top Cairn (Dave)

2nd 2 trees down

Buried shafts

Collapsed shaft

Alt. Cairns?

4 shafts

* 1st Cairn (Dave)

Ora stream direction

Leaf Cave

D5 Cave

Ora

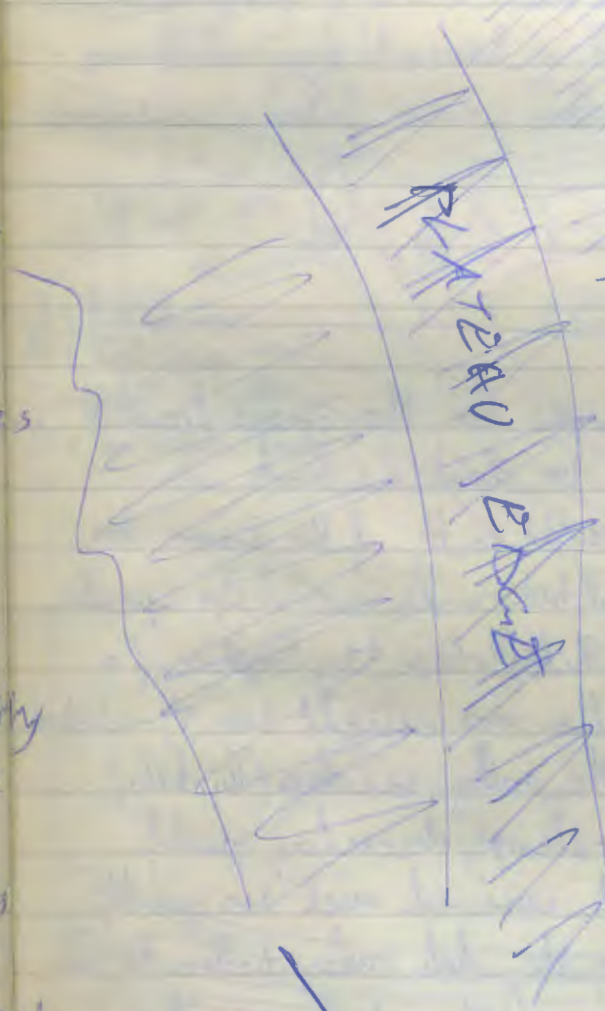
Snow plug shaft

Walking Stick Pot

Legos Encina

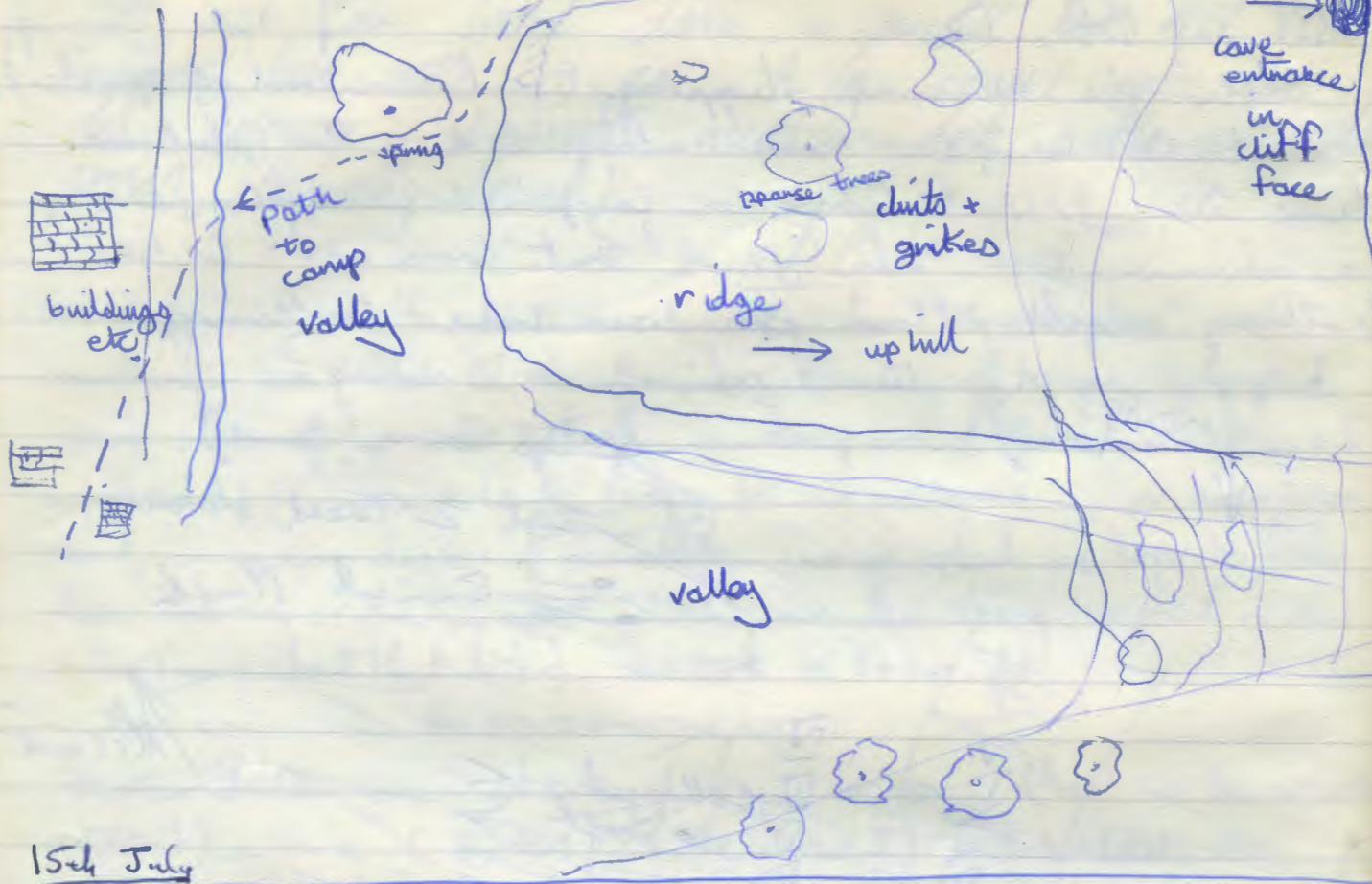
Dave

let
F
ere
wh
and
only
ce
sibly
on
ack
bar
round
st in Physic



PLATEAU
RIDGE
TREES

* Approx. site of "smoked food" cave

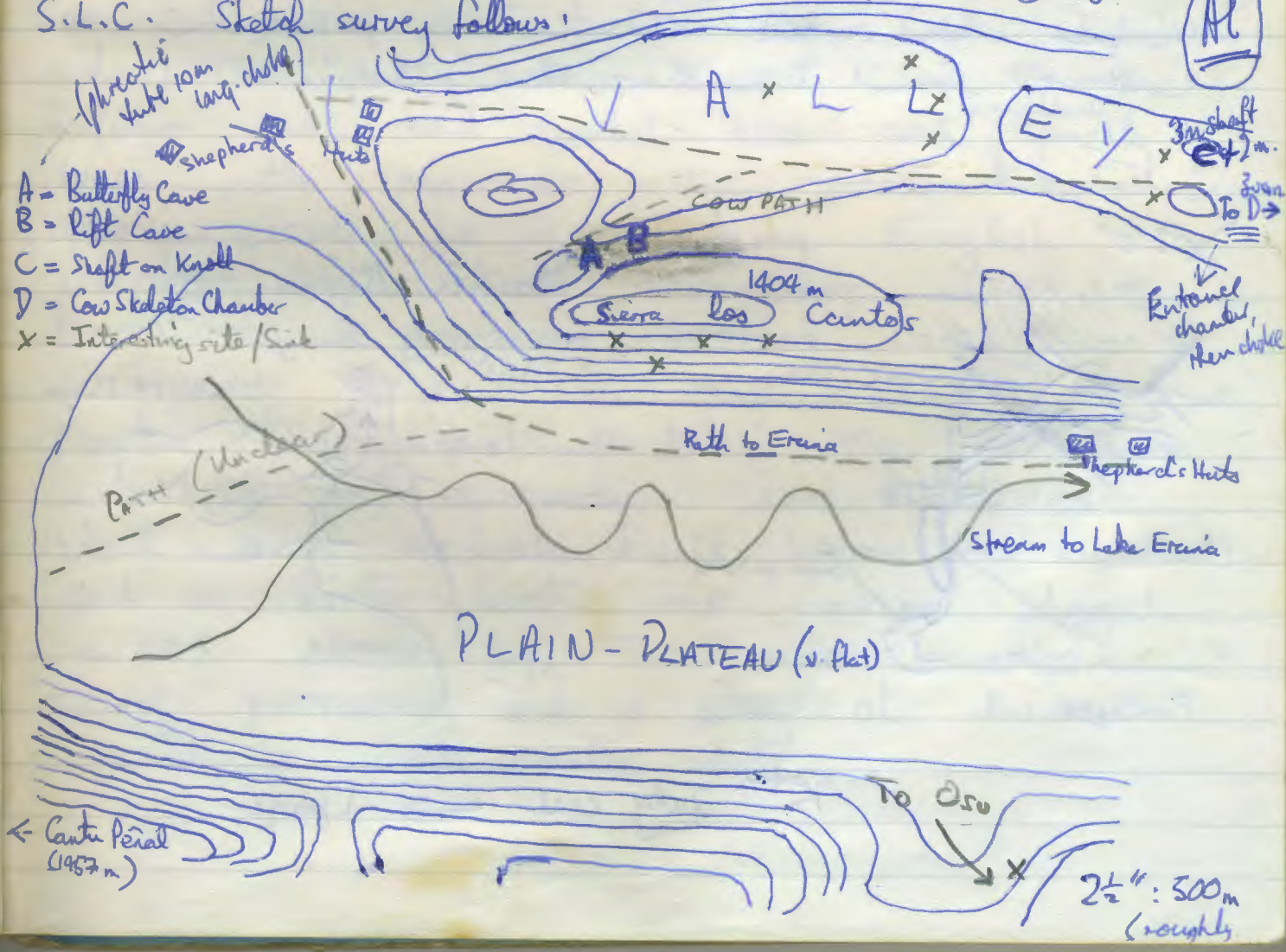


15th July

15/7 Stephan Mike & Al left camp ^{this morning} with high hopes for the caves located yesterday (~~at the same time~~); hopes doomed to be dashed. Work was concentrated on the southern face of valley to the south of the Sierra las Cortes. Two "hopeful" caves - one, a horizontal tube under a rock-ledge, spiralling clockwise downwards and optimistically labelled "Butterfly Cave" by Stephan (a "sample" for the bug-collector of the Expedition was caught here!!) - looked after about 25'. The other, 25 yards down the valley, needless (luckily), started as a tight horizontal crawl into a sharply descending, quickly narrowing rift leading to the left - which narrowed much too quickly. Disappointment overcome we then looked along the whole valley-bottom to the south of S.L.C. and large parts of the face of the hill opposite. Two very interesting shafts / entrances were found. One, on top of a knoll

was discovered by Stephan, who, descending through a boulder choke at the bottom of the 10' shaft for a further 5', declared the thing to be "Too tight" and "unstable." Further down the valley, passing many sinks a further large entrance was found ^(by me!!) leading into a chamber close to the surface - 6' x 8' x 20', containing a cow's skeleton (at least, we presumed it was a cow!!) However, of three possible exits from this chamber, three were blocked by boulder chokes. Last despair overtake all, tho', it must be "noted" that the four entrances "noted" (by sight) in the northern face of S.L.C. still remain to be looked at. And that interesting possibilities were observed to the south and west of the valley beyond.

S.L.C. Sketch survey follows:



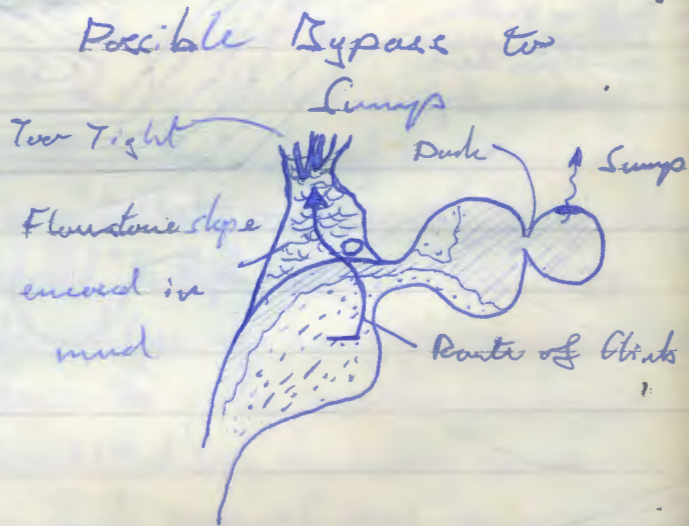
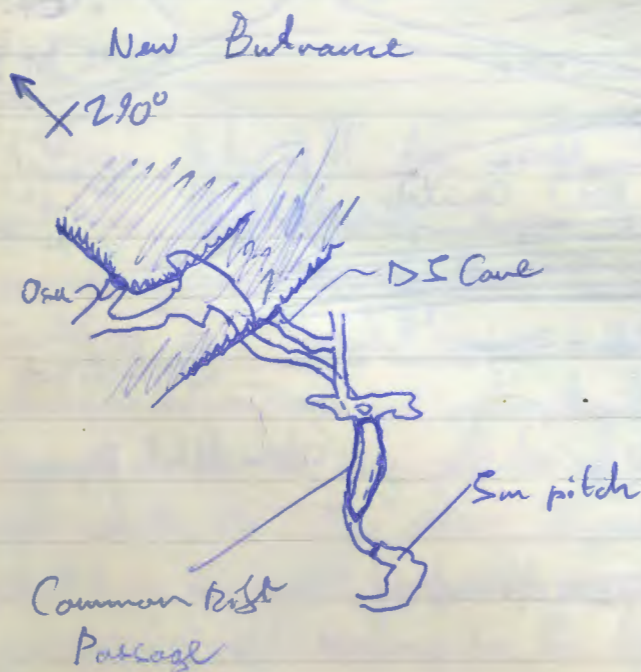
- A = Butterfly Cave
- B = Lift Cave
- C = Shaft on Knoll
- D = Cow Skeleton Chamber
- X = Interesting site/Sink

2 1/2" : 500m
(roughly)

Mak, Matin, Pate - One of Matin walks V. hot 'Diced' route to visit
 6 hrs. Planted dye detector in a resurgence.

Kbb, Edin, Dove, Cavalham

Down Osa again, ~~was~~ let to leave the camp
 yet again! Mind you, it was only just before
 the morning was out. Finished surveying up to
 upstream siphon. Also visited downstream sumps.
 Attempted to push first obvious possible bypass
 but after a dangerous climb up, it proved not to
 bear fruit. On the way out visited a small
 cave entrance above Osa. Low passage
 dropped into deep rift, a soft which
 proved to be the top part of the Osa rift
 passage above the 5m ladder pitch. So
 we have found another Osa entrance.



15th July cont → 1 pager

16th Dave, Amaliam, Simon, Mike and Al.

Visited the Caves George, paddled, SETed, walked, picniced and assisted Simon catching butterflies.

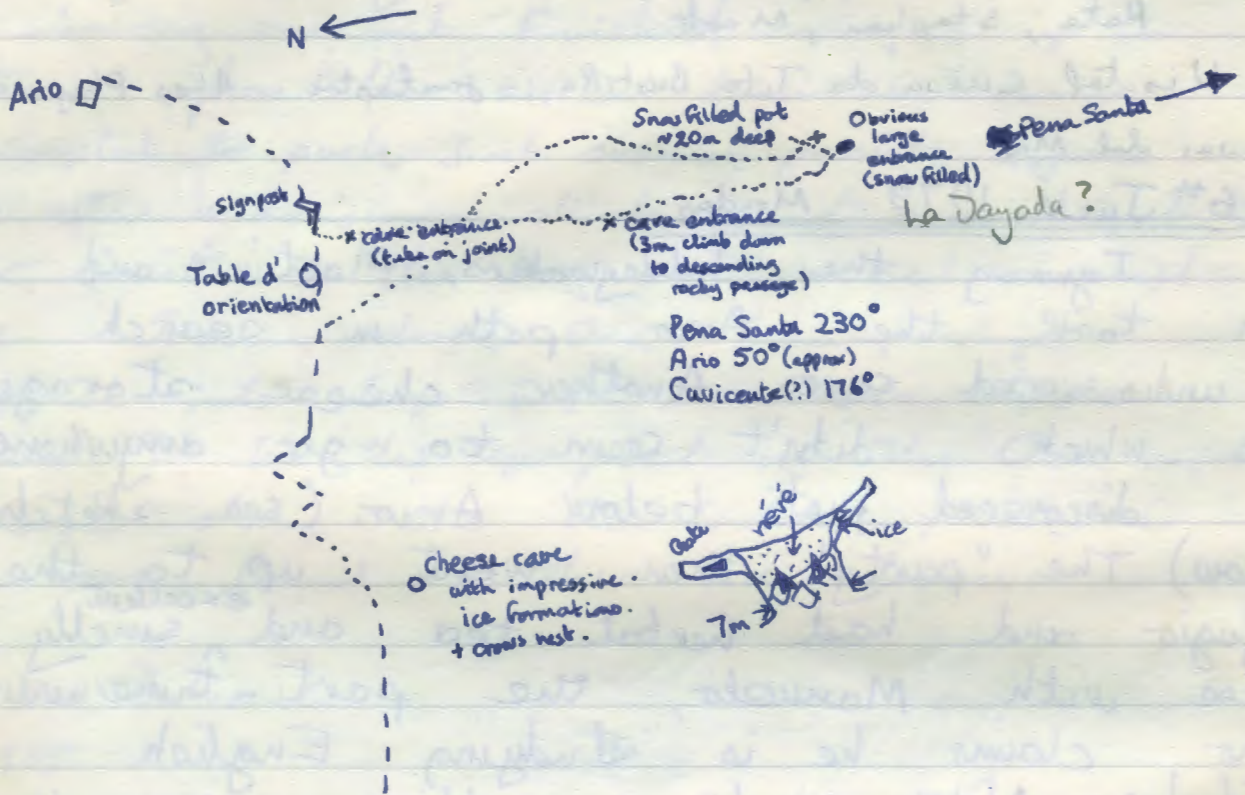
Pete, Stephen, Mark

Visited Cueva de Tito Bustillo - fantastic. A Los Playa de Cuevas del Mar

16th July 1979. Monday

Ignoring the holidaymakers, Martin and John took the Arrio path in search of undiscovered caves. Another cheese storage cave which didn't seem to go anywhere was discovered just below Arrio. (see sketch below.) The "party" then went up to the Refugio and had herbal tea and ^{excellent} and ^{smelly} cheese with Manuelo, the part-time warden, who claims he is studying English philology. After much scrambling among the limestone, a promising looking cave was discovered in a ten foot shaft by Martin. The final visits of the afternoon were to an enormous snow filled cave about seven hundred feet below the summits and a forty foot deep snow plugged shaft close by. The area seems very promising and a stay at Arrio would be well worth while.

C A R E S G O R G W



Pena Santa 230°
Ario 50° (approx)
Cavicente(?) 176°

15th July (cont)

A party (Skunk, Skippy, Simon, Kevin, Ian, Lizzie & Kathy) set out in Skunk's land rover to enter & explore the resurgence of El Moyo. We set off on a track past the mines to Belbin and then over into the next valley. Here the party split Simon & Skippy following the previously blazed trail, Skunk, Kevin Ian (myself) Lizzie & Kathy starting down an apparently easier route. After a few hundred metres this going proved difficult and hand-over-hand descent ensued. Eventually all parties met up at the resurgence. Simon & Skippy had rigged the entrance pitches (to get to the entrance) & discovered the existing river passage beginning with the lake at the entrance. After much rock & swimming up river & exciting cascades for 50m a sump was reached. Returning & telling the tale of a rift in the ceiling Skunk, Kevin & myself & the others returned to explore the rift & found a bypass to the first sump & many side passages, rift & evidence of previous covers. A 2nd section of streamway above sump 1 was found this sumped after 50m. and no by pass found on this trip.

We returned rather late to the land rover
& after 7 people lifting a land rover to
allow a wheel change arrived back at
camp just after a rescue party had
left at $\approx 12-30$ am. All returned
safely.
Jan

17th July (Tuesday I think) Skunk, Skippy, Kew
(the pushers)
El Hoya la Madre - again. Pete, Ian, Simon (the
surveyors - for a bit, anyway).

An unbelievably early start resulted in the group standing outside the
convergence at 11 am, with high hopes of discovering many miles of great
stream work? We started surveying from the entrance, not surprisingly,
and soon had finished the lower series including Sump 1. Being extremely
old we then exited for some lunch in the baking sun. After the
~~statutory~~ statutory lunch break the work was resumed. The climb to
the bypass provided some amusing antics whilst tape holding etc.
At the top we met the Otter, who had just returned from their ~~inlet~~
highly dangerous inlet - which rather curiously sumps after approx 700' (!?).
Surveying was continued for at least another 3 legs! At this point the
large chamber was reached. An obvious passage to the right was followed
by Pete and myself (Simon). This continued upwards with gnaty

stal flows to a chamber after about 100'. A climb up, descent & another climb up in the large rift leaving the chamber, led to a sandy crawl for about 30' to a squeeze suitable for the smallest Crayfish in ~~the~~ Eruin. Yet another climb up a stal covered rift further back in the passage (before the above mentioned chamber) led to a bit of decorated high level oxbow about 15' long. From this a chimney went up about 30' to a squeeze which probably had not been passed before (I broke a stal - shock, horror). A crawl continued for ~ 30' to a point where you could actually stand up! Unfortunately after this the passage was only suitable for more Eruin Crayfish. After this we exited - S, S & K followed a short while later. The time was a civilised 6pm - still hot enough to make the walk back extremely sweaty. The flies were little sods - one even got into the beer.

The report of the pushes should now follow: - (gosh, the suspense is killing).

Somewhat later: - (29-7-79) Kev., Skippy & Skunk.

We found a narrow passage off to the left ~~side~~ in the upper series, where the jetholes end just before the large rift chamber. About 20' of angular passage gave into the streamway I thought I had heard through another side passage last trip. Presence of another stream was thus confirmed. Proceeded upstream past numerous sumps to first sump. Then up slippery, moon-milk covered rift to chamber. From there Skippy went up and found it closed. The draught seemed to disappear?? No obvious bypass was found. Back to main upper series passage. Then Skunk noticed the climb above point where sump ^{like} drains into stream-way. Skunk got a long way up, but no bypass seems likely.

But disappointing really. It really does seem to end. Shame!
Kev.