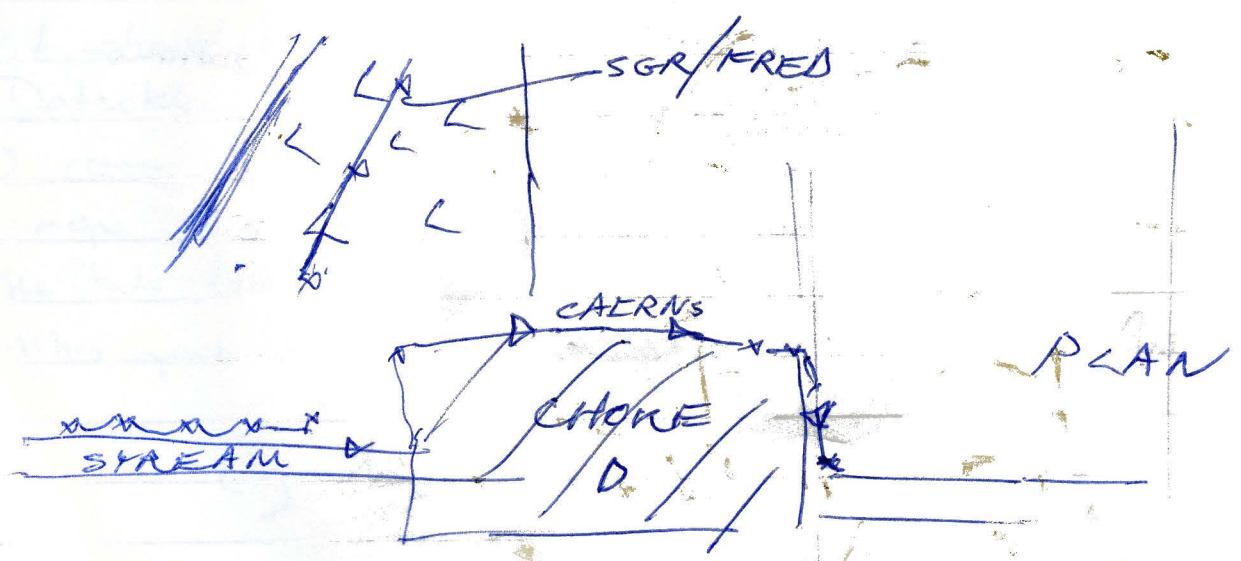
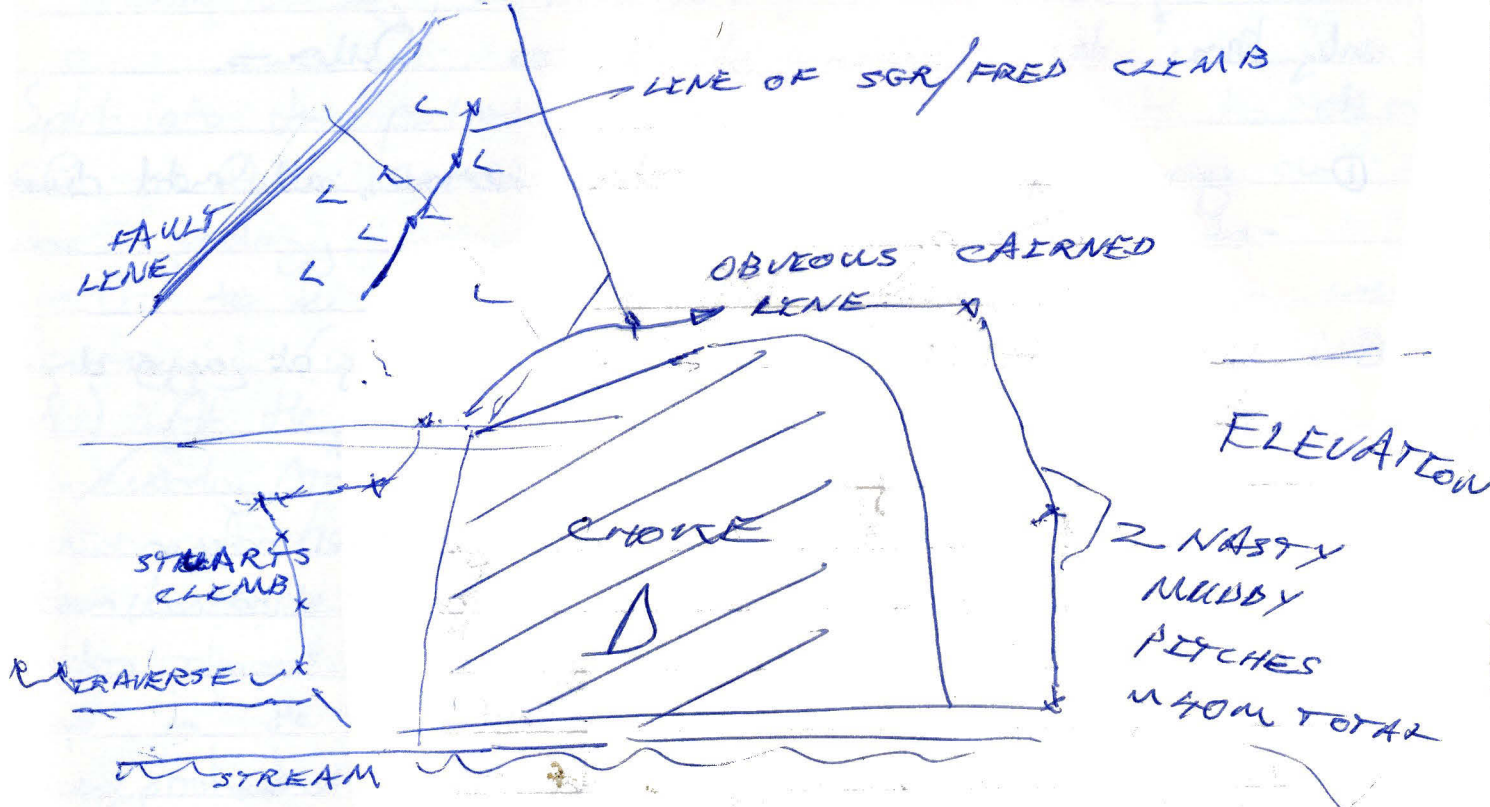
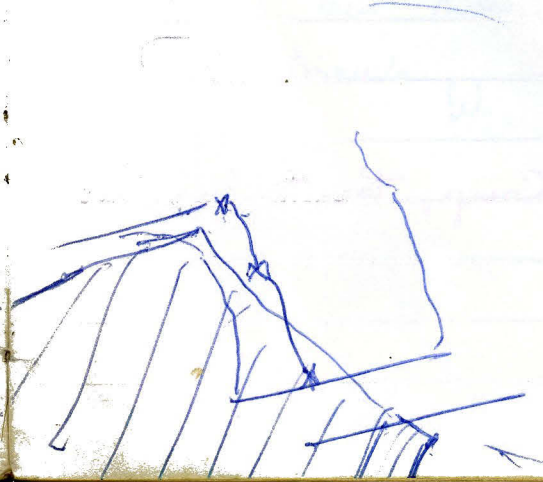


# New bit to get past Choke Dugout



HUGE CHAMBER (ECHOSEC)

(Choke D is a roof collapse from a fault, and is at the base of a huge chamber)



We should have 5 bolt bits Where are they!!

I only know the location of 3, as follows.

- ① grey bag, new style petzl hammer, all metal driver  
- at 2/7 camp.
- ② new bit bought by SGR. - hammer + bag at arrio driver  
nicked by the divers
- ③ red bag, metal petzl driver, new style petzl hammer.  
bag at arrio, driver at base being repaired, hammer missing  
possibly at 53/5
- ④ red bag missing      rubber petzl driver missing      old petzl hammer at arrio
- ⑤ red bag missing      metal petzl driver missing      wooden handled hammer missing

Also there is a broken full driver at arrio.

Any information greatly appreciated

Dave

25/7/89 Set fair. John going to Top Camp, then to Las Fuentes and back to Arrio by path

\* know know Dave, use a dictionary next time

24/7/89

Dave W. Hordley, William Stead, Phil Rose, Martin Laverby

Split into two parties - me and William went to do rig GSP. - Phil & Martin went down the stairs to do some geology.

Got to the bottom of GSP. There was some very iffy rigging (and some very good rigging especially the 120m pitch.) At the bottom - no sign of a bolt bit. The end - Tuesday ~~Morning~~ <sup>Afternoon</sup> feeling - will go with a small amount of hammering - I used a rock but didn't make it wide enough. The routes down through the boulders almost all choked, one possibility was a 10m drop in the boulders - v. low at the top. Stones landed in a pool at the bottom. Other routes :- only other real possibility is the parallel shaft 1/4 of the way up the last pitch. Failed to manage to perchle across to it but it should be possible, with kit.

Detacked the rest of the cave. Phil & Martin helped carry the kit down the final rift. Detacked the rope down flying rebetags into the chit pit. All the kit left at bottom of flying rebetags

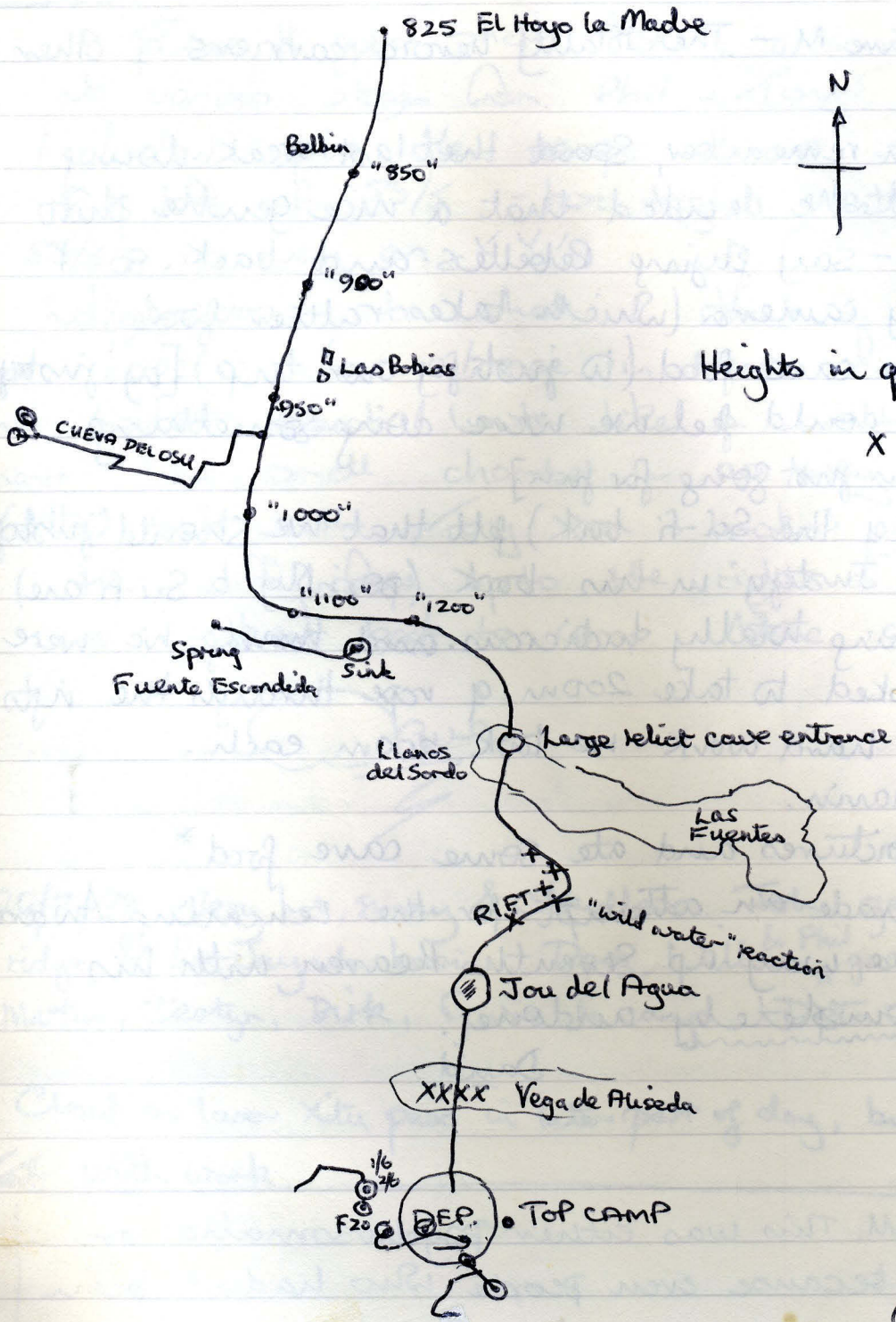
- 10-11 hrs spent v/s in all.

Dave

P.S. Got out then threw up. Must have been the cave water or the gone-off penicillin Primmula.  
W.

25/7/89 A debilitatingly hot day, a little cloudy on the tops, and a slight breeze. John trekked the Stony desert from Arico to Top Camp, then to Las Fuentes and back on the main track to Arico, in order to complete the top third of the downing trace of El Hoyo la Madre, done in two days earlier from Base Camp. The net result is that some of the top camp caves go to El Hoyo la Madre, probably F20 and Torcada Blanca. 1/6 2/6 is more problematical → it may reawake in a Dobra tributary perhaps near Vega Redonda\*. I did not go up to the ridge in such heat, so any contribution of top camp caves to 2/7 is not yet known. The reaction began at top camp heading  $15^\circ$ , and terminated the other side of the main depression heading  $5^\circ$ . The extent south is not known. This proceeds to Vega de Aliseda, where there are several collapse depressions. At Jón del Agua, a closed depression with intermittent water in the bottom, it enters a rift heading NE. This has several collapse depressions and "wild water" reaction, finally lining up in Llanos del Sordo (western part of Las Fuentes) with a relict phreatic tube. Swinging west through Fuente Escondida, the trend is then NNE to Las Bobias and finally north to El Hoyo la Madre. Tributaries are the depressions in Vega de Aliseda, Jón del Agua, Las Fuentes/Llanos del Sordo, Fuente Escondida, Cueva del Oso.

\* 1/6, 2/6 sump at 1298m above sea level; Vega Redonda  
 is at 1540m. — point taken, John



Heights in quotes are estimated  
 X = collapse depression

John

26 7 89 Iestyn & Dave M - The totally heroic carriers of other people's gear.

We have, if you remember, spent the last week doing very little indeed. We decided that a nice gentle photo trip was in order - say flying Peñoles and back, so I packed my weeny camera (which takes rather good pictures) and some cave food (to justify our trip) [by 'justify' I mean that we could feel we were doing something useful, rather than just going for fun.]

Señor Harsley (he of the Sci-fi book) felt that we should "justify" our trip as well. "Justify" in his book (possibly a Sci-fi one) means do something totally ludicrous. ~~and turning~~ we were ~~ordered~~ politely asked to take 200m of rope through the rifts.

We did. It was hard work - we took 200m each.

We met Dirk & Gavin.

We took some pictures and ate some cave food.\*

Iestyn (alone) made an attempt for the Lemming Award by coming all the way up Seventh Heaven with his Delta Maillan completely undone.

David

I was seriously ill. This was either psychosomatic or something else, because even people who hadn't been coming were ill.

\* including some pineapple pimiento. If I am seriously ill, like William, we will know what is responsible.

25/7/89

Dave & I goes shaft boring around 53/5 with help at various stages from Phil & Tony.

I climbed upto the caves above 53/5 Hadis rift to left of 53/5 - too tight, entrance to right of 53/5 no way on

Walked across to what I think is John's black stripe cave - low entrance in base of cliff - drop down boulders - which look like a well across the entrance to small chamber - no way on.

Walked back with Tony on looked at some caves in the cliff faces upto the right of the valley as we walked back to camp. None went anywhere

Cave

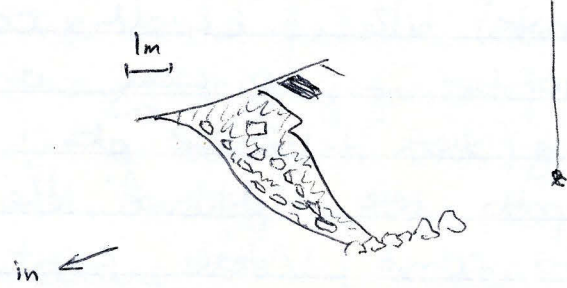
26/7/89 Very hot, sunny & cloudless. John going on Tullayn ridge & La Jayada basin. Dave, William & Phil gone caving. Martin, Iestyn, Dirk, Gavin in camp. Delta to Base

Cloud on lower Xitu pass in later part of day, but did not interfere ~~with~~ with work.

Geological Notes on 2/7 Entrance series + nits. (24/7/89)

1. P36 is notable for the ~~large~~ voids partially filled with cm scale calcite crystals
2. Rock changes half way down 7th Heaven rock changes from yellow/brown wiggly, crystalline choss to light grey, massive limestone.

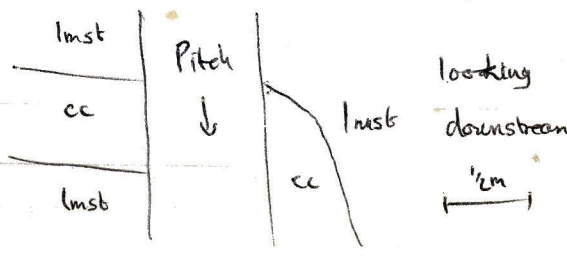
Several m below base of pitch there is an exposure of dark grey limestone which looks like a void fill containing breccia of the light grey limestone



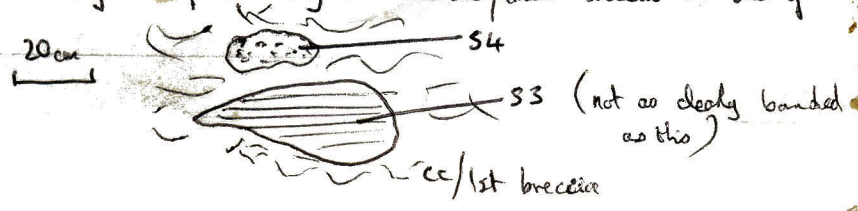
3. Opposite this, in an alcove to left (W) is an ancient sediment with wide range of particle sizes from 1/2 m angular limestone ~~blocks~~ wedge shaped block to 2cm scale rounded limestone and ferruginous pebbles, all in a dark indurated matrix. SAMPLE 1

4. Just above head of climb down into Paradise (surely you should go up to Paradise?) the passage bisects an old <sup>3/4 m dia.</sup> phreatic tube now filled by layered calcite. Where this has been slightly redissolved back, 1/2 cm ovate black, polished pebbles are found on the ledge. SAMPLE 2

5. At top of Flying Rebels limestone is just as above but has many large massive calcite veins with limestone brecciated more at vein margins.



6. A <sup>soft</sup> light grey, ~~clay~~ banded clay found filling elliptical void in calcite/lmsb breccia on lhs of passage. SAMPLE 3





7. Above the clay was a pocket of brown sand with quartz needles and rounded black clasts. SAMPLE 4.

Roof tube appears to go into GSP, implying that that may have been original downstream route, rather than an inlet. Also, old, & fractured, stal are present on far side of shaft ~2/3 way up

8. At the bottom of Flying Rébellés, took SAMPLE 5, comprising a lump of coarsely crystalline calcite (or dolomite?) from vein which strikes 054°, dip 55° SSE.

9. The black, polished pebbles are still quite obvious in solution pockets.

10. About a m. above base of pitch and several m. towards ascending traverse is a 1/2 m. deep fill of angular-subrounded limestone pebbles<sup>in pocket of rhs</sup>. There is some indication of possible ~~for~~ downstream imbrication (especially near top) & a bi (or more) modal size distribution with 1/2 cm + 4 cm sizes being notable. There is later brown clay on top

11. The first moonmilley white stal occurs as a flow from inlet just beyond F.R on left. There is a gap behind it where there has been ~~resolution~~ of it and the rock.

12. Popcorn starts to become notable on walls. There are also vermiculations (patterned coatings) of friable-looking reddish brown clay. The walls are also sometimes coated with a crust of what looks like 2-3mm thick acicular calcite



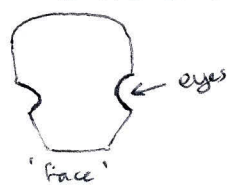
13. Banded cc dips ~30 to N with 80° strike on the ascending traverse but gives way to good limestone at the horizontal traverse.

14. Drop down Pablo Pot through more acicular calcite banded fill to solid limestone at bottom. Popcorn continues; the ~~rock~~ sand/mud here has much smaller grains of black in it; rift continues through limestone blocks embedded in massive acicular calcite

15. Above climb down to Gripper pitch a peculiar greyish-white spongy <sup>mould like</sup> material is found as ~~an~~ up to a cm thick fluffy coating on the wall & old stal. It is very soft, falls at a touch and compresses to a minute fraction of its in situ volume in SAMPLE 6. Could be significant that this is a dry & draughtily situation? Needs analysing. (Similar material was also present in a dry part of Teresa Series in Xitu).

16. Veins strike 076° with dip 45°-50° N here, still enclosing limestone blocks. By top of next pitch rock has yellow-white calcite coating which can be removed for a couple of mm by scraping & the surface weathers into rounded pebbles & hollows.

17. Next pitch (Gripper) drops through good ~~flat~~ limestone with vertical erosion flutes into choss at bottom. There are the bones of a large bat? here - long bones 80-90cm, skull 4x4 cm:



As this isn't cemented ~~or~~, covered in sediment, or extremely fragile one assumes this is quite recent. Juan Jose G ~~may~~ or his 'bat friend' may be able to assist with identification.

Another sand SAMPLE 7 taken from the chamber near the bat bones. Contains rounded quartz grains, calcite and brown silt/clay with some small black grains.

18. In Black Crystal rift (where we failed to see any black crystals although there was a v. thin black coating over muddy calcite crystals in some places) there is a good erosion level in the left hand wall with a fine whitish-grey sand with black specks over redder silt/clay near the back, irregular calcite crystals & irregular cc crystals with a thin spheroidal coating giving the appearance of popcorn - possibly a crystal pool deposit of dd. Also a false floor a metre or so down past which you squeeze down

