

Camping trip Gawn + Dirk

21-24/7/89

Day 1. went down to camp meeting Harry + W/odek at J.A.

Day 2. Pushed Orucilla bypass with Harry. From top of climb up after Primula Point, from small chamber follow cairns along (R) wall. After 10-20 m small chamber off to (R). Climb out into another scree chamber, overlooked by Akerfan\*. Follow (R) wall (cairns) up scree slope, then down roped slope. Continue to climb under chock stone, and then to nasty muddy pitch down to streamway, landing ~100m from Choke D. Places worth looking at: half way up fir main scree slope, on (L) wall, 3 second drop, undescended. Just before final pitch into streamway, on (L), another 3 sec drop: probably down to streamway; may avoid wading.

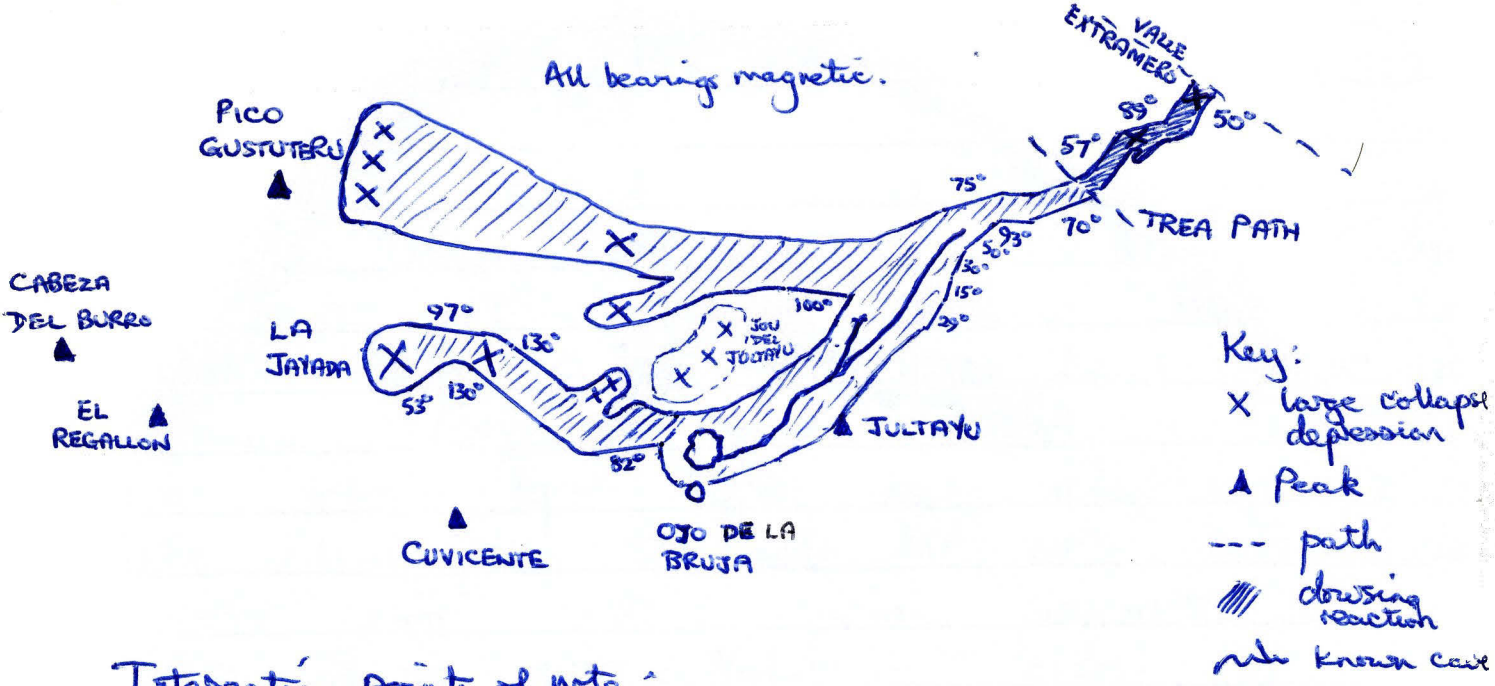
Day 3: Surveyed above (see yellow survey book).

Day 4: Came out

\* This name is not in particularly good taste. Any other suggestions? I agree. I'd like to point out the name is not mine Me too.



26/7/89 John completed upper catchment of 2/7 by dowsing.



Interesting points of note:

The catchment is about 2 sq. km in area, and definitely seems to close off at the west in the circle of peaks Pico Gustuturu, Cabeza del Burro, El Regallon, Cuvicente, Jultaya and so no contribution is expected from top camp caves. Curiously Jou del Jultaya does not seem to contribute. John

Camping ins and outs

- WED 26
- THURS 27
- FRI 28
- SAT 29
- SUN 30
- MON 31
- TUE

	IN	OUT
	Phil, Dave H, William	
	<u>Fred, Steve, Martin, Wlodek</u>	
	↓	
	Gavin Sherry, Paul M	Phil, Dave, William
		<u>Fred, Steve, Martin, Wlodek</u>

26/7/89 Phil & Ditta looking at geology

A more than freezing day, very slowly climbing up to 2/7 while looking at even more rock. Ditta got a terrible shock when encountering a 30 cm long black and yellow spotted snake. Incidentally the snake was just about as shocked and made straight for cave. Detailed geological notes can be found in the topcamp notebook. In summary

- the slope up to Jaltaya is the diplope of bedding that can be clearly seen in the central massive looking across.
- bedding is extremely massive, up to 200 m thick
- dolomite occurs in lenses, elongated in direction 130 but not related to bedding.
- the Jaltaya ridge is white limestone black stripy limestone only comes in just before the Jaltaya and Tres path meet. The contact is possibly faulted.
- there are two sets of joints one striking  $120^\circ$ , the other  $20-40^\circ$ . Xiv, 2/7 and Top Camp Cave seem to follow both these joint orientations.
- there are two major faults meeting in the large shattered depression between Aric and Jaltaya. Brittle deformation on the fault surfaces could have caused weaknesses in the otherwise massive uniform micrite.

hope you like this bullshit

Ditta

FURTHER CAVING SPECIES

PROTECTION? WHAT IS ZIS PROTECTION?

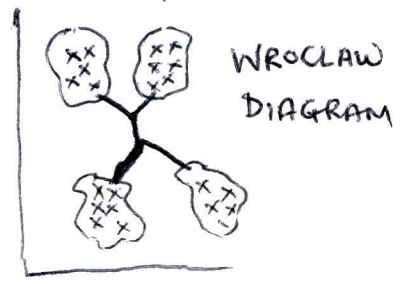


Wtodeck<sup>\*\*\*</sup> (Genaro-spleoteklub Glinica<sup>\*</sup>)

The fear centre of this man's brain has been surgically removed. Like leading desperate climbs & listening to others whimper as they second it ("you ---king mad bastard")

Favorite phrase: "Life is brutal & full of saotaskas<sup>\*\*</sup>"  
Does wessups at underground camp to dry his alpinex!

- \*\*\* WKODEK
- \*\* WROCLAW
- \* ZASADZKAS



Ditta & Gavin went shaft bashing down Valle Extremos and up a side valley. Found a few solutional entries but no real cave. In other words should you fancy to walk up the valley from the first trees towards Jultay - don't bother! However, it is thought that z/7 is directly below the ridge to the (1) (true 2)

Thank you all for giving me the chance to enjoy with it was really great. Take care of yourselves and make a lot progress in 2/7 Anybody welcome to Korea and visiting my club. Then I'll put you all up in the 5 stars underground hotel.

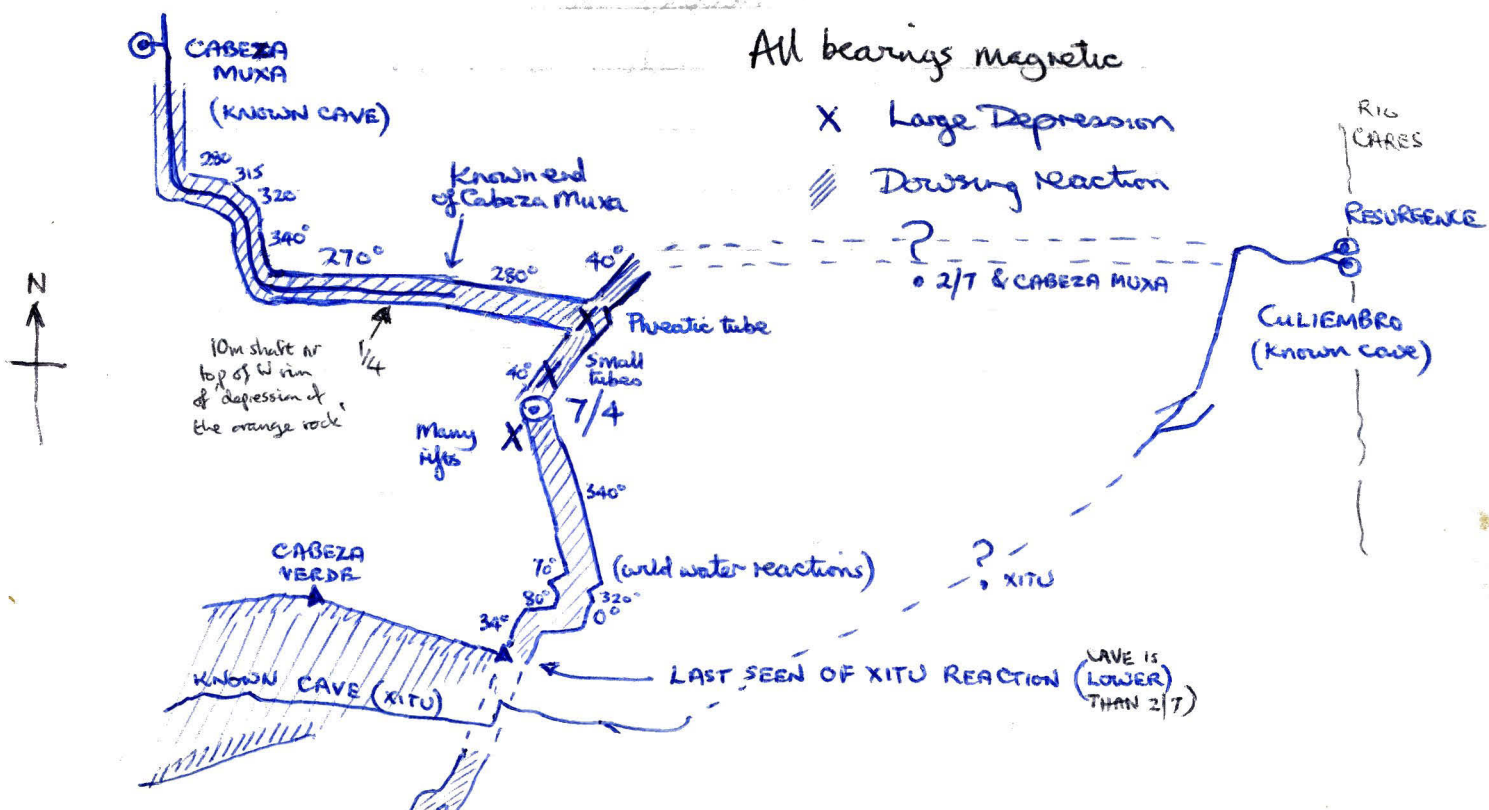
Su Yong, Lee

Add: DONG GUK UNIVERSITY CAVE CLUB  
3-GA, PIL-DONG,  
CHUNG-GU, SEOUL  
KOREA.

27/7/89 A little misty on tops and cooler than the last two days. John walked with Martin L. along 2/7 route from Cabeza Hlambronia to junction with Cabeza Muxa!

Martin then left to walk to Vega Major. John walked back to Arico via path from Cabeza Muxa entrance, and then looked at Arico depression. Suggest that 7/4 (over 1988) and the depressions near it be looked at for an entry (NB. may be sumped at this point)

reaction continued N & then NE into Vega Major



27/7/89

56

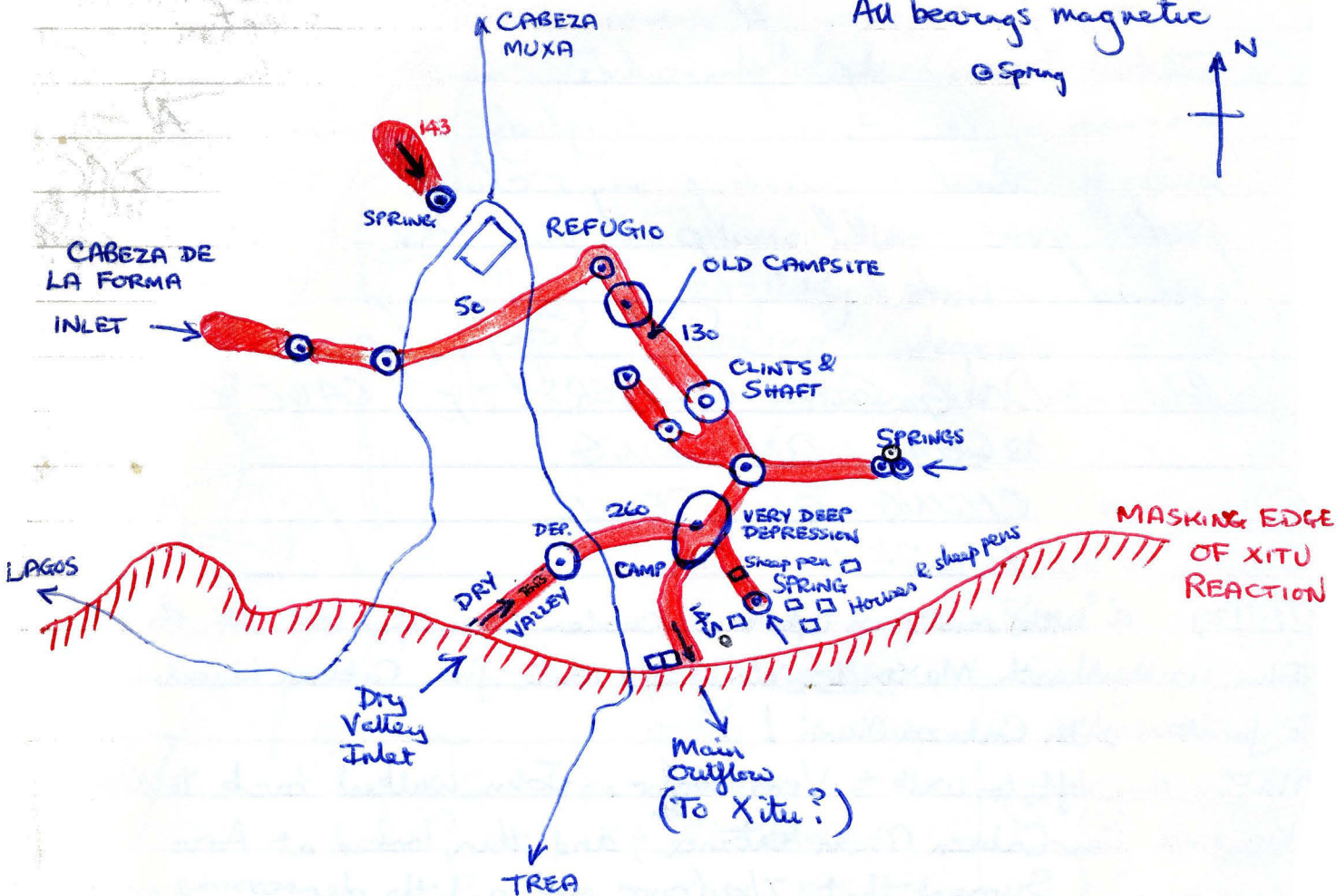
# The Caves of the Ario Depression

 Dowsing reaction

 Depression

All bearings magnetic

 Spring



Unfortunately much of the Southern part is masked by the Xitu reaction. Hence neither the source of the dry valley inlet nor the main outflow destination is known.

John

28/7/89 Another hot day. John leaving for Base (leaving Base 31/7/89 for ferry). Best of luck with your endeavours. It will be very interesting to see how the real cave ties up with the dowsing story. Go to it — at least to Cabeza Muxa Junction! See you all in Manchester John.

Bluetz

A story about composite and large amounts of festering  
— what is life like in Aio without going caring

A lot of dowsing has been tried by other members of  
OUCC, advised by John Steve R tried it and also  
reacted on "k.t.v". I asked him "Did it wiggle" —

"yes, I'm afraid so" with Steve being very embarrassed.

Even more so embarrassing as Graham caught it on film.

Also yesterday evening Sherry got lost in the  
Canal de Trea, on the valley side of the Jultayu  
ridge. 3 desperate attempts to climb up had to be

aborted then she managed to slide down after

dinner and still no Sherry — a major search party was sent

out but luckily she managed to find her way back

up the Trea path. We were glad to see her in one piece —

Graham was even happier as his video camera was undamaged

Today is Friday and large amounts of festering is taking  
place. Dirk and friend are to walk up Jultayu but show

no signs of movement, John is tidying Big Eric fearing

the sun outside. The chances for shaft bashing are low

as dehydration would mummify people instantly.

The festering continues

Ditta

D. Horsley INS AND OUTS

	IN	OUT
Fri	Fred, Steve, Martin, Whodet	
Sat <sup>29</sup>	<del>Sherry</del> , Paul M, Gavin	
Sun		
Mon		
Tues <sup>1</sup>		Fred, Steve, Martin, Whodet
Wed <sup>2</sup>		<del>Sherry</del> , Paul, Gavin

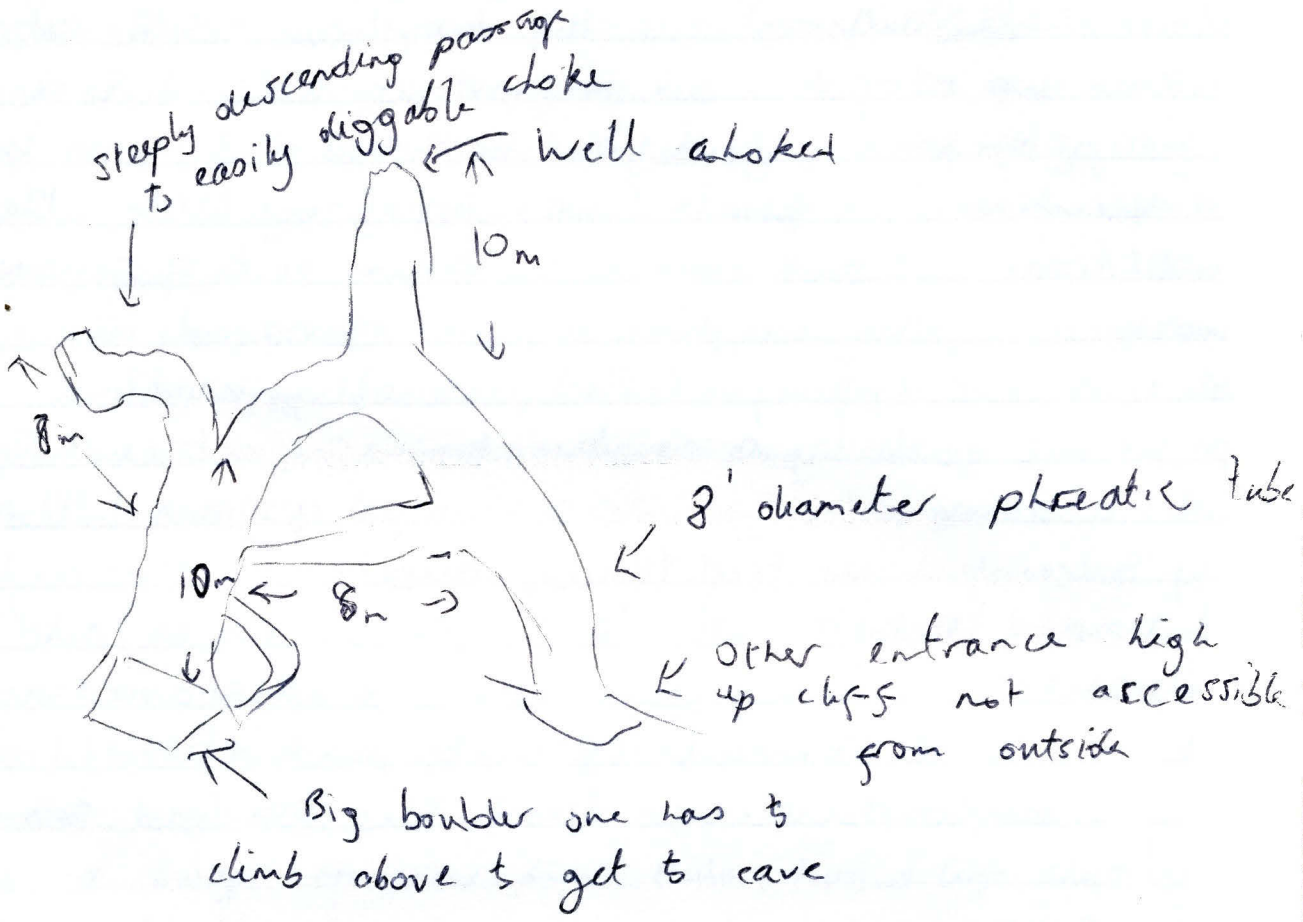
3 people can go down now, and a further 3~~4~~ on Tuesday. If there are lots of people keen to go down, send a message and we'll come out on Tues.

- 29/7/88. Dave M., Paul, Nikki, .

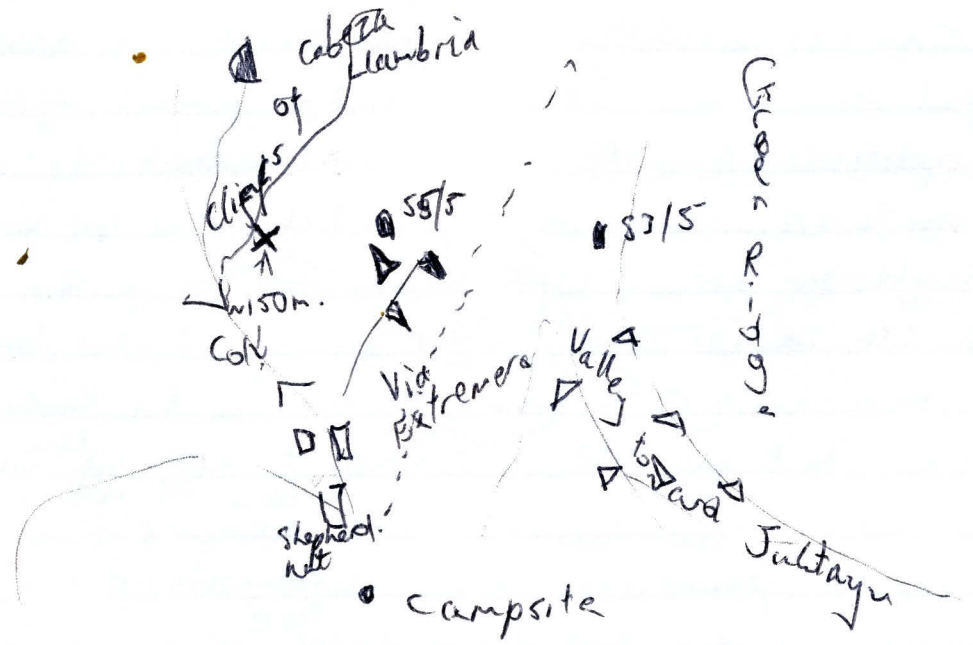
Went down to 53/5. Dug another boulder and a bit of the floor out. The rift narrows to 3" wide for about 4' no go. Climb up 8' to the right through a squeeze leads to 2 body lengths of passage and a possible dig over the top of the 3" rift. Someone else can have a go. All the digging gear is now at this entrance. Also found a v small hole about 30m to the right and 15m above 53/5. A tightish squeeze leads to a steeply descending passage for 10m or so. It then doubles back under itself. The huge roar heard in 53/5 is heard here although not quite so loud. The end is compacted mud and small stones and may be worth digging. On the way back we found an interesting series of phreatic tunnels above and to the right of 53/5 in the face of Labeza Llambrico. No mark is. This is worth digging as there



is a network of large phreatic tunnels about 8' cross-section choked with small stone



This cave is not marked. Here is where it is.



Arica basin

PTO

I would like to add that I climbed up the fault line above 53/5 to investigate the two holes visible ~~above~~ higher up. I got to an interesting little hole with lots of ways in from outside, but no ways out from inside.

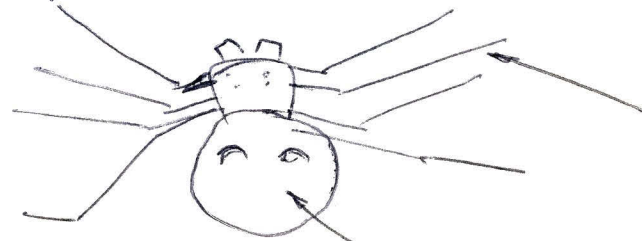
I then realised that I was not going to be able to climb down without extremely grave risk of severe injury. This meant going up, which also appeared to offer grave risk of severe injury. I did, actually, make it to the top in the end by a combination of friction holds, tree holds and very dodgy little clumps of grass holds. I was very successful in frightening myself very thoroughly.

I went back to 53/5 (by an easier route) and told Paul and Nikki how I had scared (and scared myself). Nikki went off to repeat the route, and returned a short time later to announce that she too had scared herself silly.

Moral: There is no need to climb the fault line above 53/5 again (unless you are tired of life)

PS To quote Duk's earlier write up "There seems to be a cave about 15m above 53/5 but this might be hard to get to" Too right.

PPS In the entrance of 54/5 was a spider this big\*:



the legs were longer, thicker and heavier than this.

this bit was broken coloured and very well camouflaged against grey rock.

\* We were all totally not under the influence of any intoxicants, stimulants or elephants when we saw it.