

27th July 1992 00:06 am. (51)

Steve, Sam & Harvey are not back!!
I've
call out via 11.59 pm 26th July 1992 11.8

Three lights have now been seen coming down
from the cave so there is no problem.

Further additions to trip to La Sengada 26th/27th/28th

Picking down the valley. Mining from La Sengada
back to the river is a small square pit
the boulders to the head of a S.N. pit (undercut)
This is well looking at is unmarked, but
retches the description in the sketch looking for.

27.7.92 I trust that the person who had sucked up some stew
at the entrance to the bog track will clear it up!
John

Mummings from John on leaving Arico for Base Camp 27.7.92.
There is certainly no lack of work to be done. Possibilities are:

- 1) New major system heading north from Jans de Arico entered via
8/11. The rearrange for this could be as far as 5 Km away.
This may include Pozo los Cuernos (SIF) and Pozo los Texos - see further remarks.
- 2) 53/5 with its remarkable drought - perhaps a new entry
to Xitu.

- 3) Possibility of a parallel system to 2/7, heading 39° at 1400m
through the Valley of Dry Bones (66/5, 69/5). This may be a
high fossil system, but there may also be a lower series at 57° via
29/5, 56/5 to Valle Extremo. This may have its own catchment to
the North of San del Tuitayn in the region of Pico Guatulara.
- 4) Deep shakelike with rift and shaft entrance by Ostal track at c. 1200m
could be an entry to the unimagined 2/7/Cabeza Muxa system above Culimbaro
This is 400m above a fossil passage at Pasaduro and 800m above Culimbaro Cave.
PTD

(52)

2/7 Upper Series
⑤ Source of the waterfall in 2/7 is probably in La Joyada (2/9) region.

⑥ 12/4 on the col between Cabeza del Verde and Cabeza Llanabina could be an entry to the proposed fossil system beyond the erosion of the Valle Extremo, and lower down to the 2/7/Cabeza Muxa junction.

I shall be "around" until the early morning of 2/8/92 when

I have to leave Base to go to France. I intend to do some heavy

walking east from Base Camp to locate both the Pozo las Texas

drainage and our new north-south system, and I will also go

to La Motina by car to locate possible reconnections.

(Fte las Palomas, Fte las Brazas)

And the beat of luck with your explorations - I expect dramatic

developments even within the week I shall still be with you!

John

27.7.92 Draft Caledonian in featuring Tim Goldford 53/5

Steve Phillips Jonathan Cooper

Generations of Oxford covers have plunged the ophiolites at the Picos. Following classic covers which after pitch after pitch the names becoming legends to their followers Xiv, the Spanish Blanc system, Ridge line, R20 (maybe not (20) right up to 2/7. Great cover = first cover, deep and good, demanding extreme endurance of courage, stamina, skill and endurance.

Then see Goldford

It and West in comparing but it is varied

to go saving on the Mondays, I'd go to the Mondays. I wouldn't drive all the way out to Spain, with half way down the Valle Extremero and spend 7 hours trying to work out which way my breath was moving in the drift about breeze. 53/5 is a fine car, a sparkling car, in its place but its place is not in the Picos

Having got this off my chest, the good side is that there is a heading gate in the stream, and the wave falls in is not big enough to justify such a waste. We looked at 3 points which may have broken into the big drift. All three in the joint of culvert, sculler rustle and general skin (that) conditions the far wall of endless gyrate

First off at the top of the one dungs the is a sloping chamber picked over the pitch. Up a mud slope there to show the ~~and~~ top is kind off. The is a way on, to the right, into a rocky plane that runs along the length of the chamber. A horizontal square through the formation (My last report) leads to it. In chamber which is a mass of strata and other good drift. Progress can be made carefully, along it

else longer. No wings on. No drift. What little wind that existed at the top of the is quite small to be a top ~~of~~, here the strata is "Big Reddy". Then two leads where systematically "picks". Both were needed by from a shelf just down from the part where the gable runs in. At the bottom of the rim is

found by climbing down a blind, muddy, exposed "down" and generally less interesting. Follow the rift "down" stream" to a right angled bend into a fairly common, very interesting. Nothing like passage. I do not like the look of it. I had a go and it did not like me.

A few nervous prods from Tim got him 6 ft in to a point where a further right angle head can be seen. This squeeze is a buggar. We may not be terribly brave but we are small, so it requires some area of rock head on mineral frame. There are two theories as to what this rift is, an outlet for a stream, jirig - parallel system, or ~~an~~ a vertical ~~show~~ back to the bottom of Princess L. Our ~~the~~ Maps shifted from the former to the latter as it became apparent that the rift is no walk in the park. However it may go. Tim stole my glasses, he thought they smelled like the bottom of hooter eyes, in fact it was Chickenshit, such is the rift lead name.

Lastly, squeezing through calcite into the rift done the dot (tear-inducing), leads to a small chamber, where the calcite close onto a solidish wall. Two possible ways down to a further chamber need either more hammering or ~~use~~ a bodder jimmieing into safety. Possible leads in ~~directions~~ below, but hard to tell. Tim took a fly he found crawling, but was fearful that it may get ahead underground so he kept it in a very safe place. Unfortunately it expired at some point, but a nice thought. Thus this lead is The Fly Under The Rock. This the sort of man we're dealing with. Last!

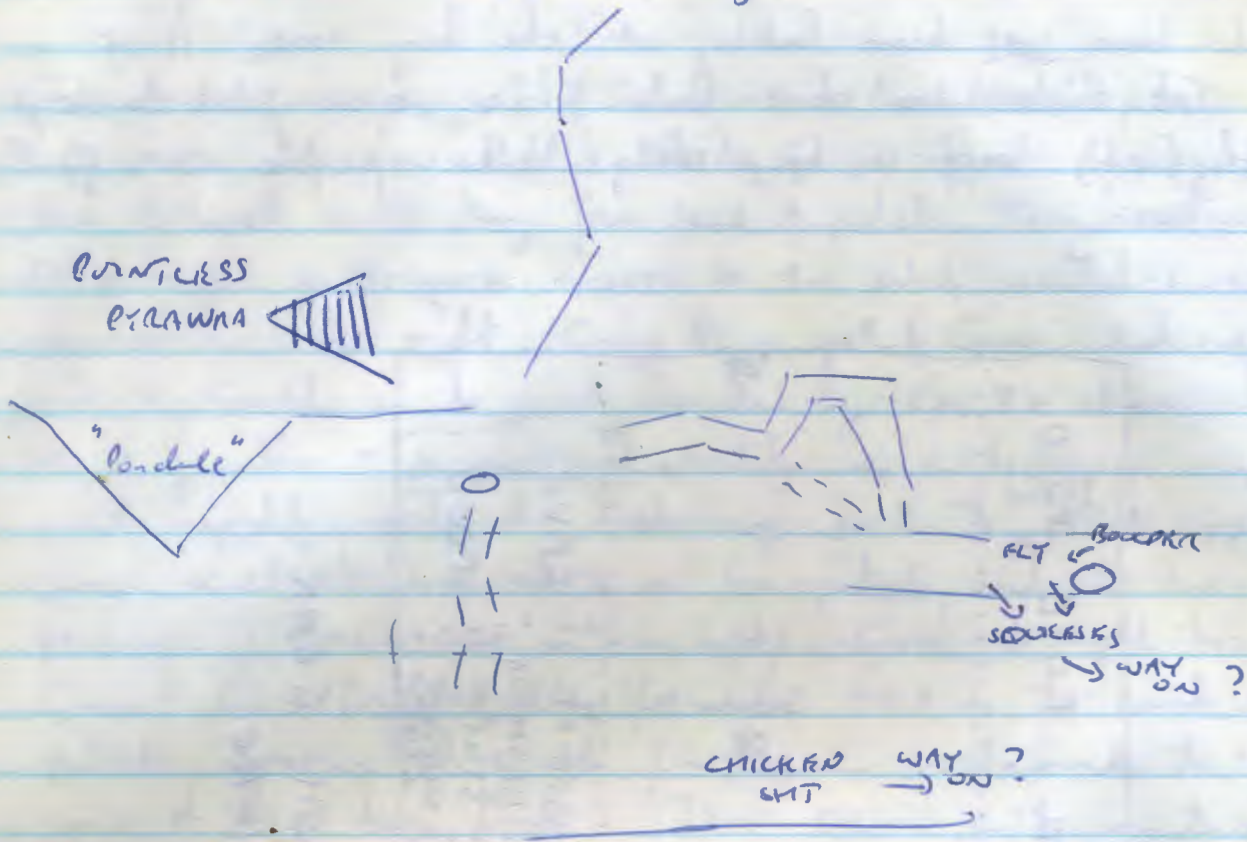
Princess theory is wind is coming from ~~the~~ somewhere higher in the cave like above the Princess

SC

Leads in SS/c

No Way On

(55)



8/11 Gary, Fenella, Chris
 27.7.92

My first cave of the expedition. Fenella's tubes de plastic showed a certain reluctance to remain attached to her generator. One of the first sights was of a sheet of flame blowing out of her generator, with Gary desperately trying to puff it out, while keeping a lit with his own flame. The ego factor got too much, so she went out with Gary. Meanwhile I logged a handline down the chub before Peanut Pitch then went & had a look at the top of the big boulder slope ~~after~~ to the right after P.P. I got scared going up a loose chub into the roof (it chucked) then grumbled, managed & squeezed through knots on the right - all to no avail.

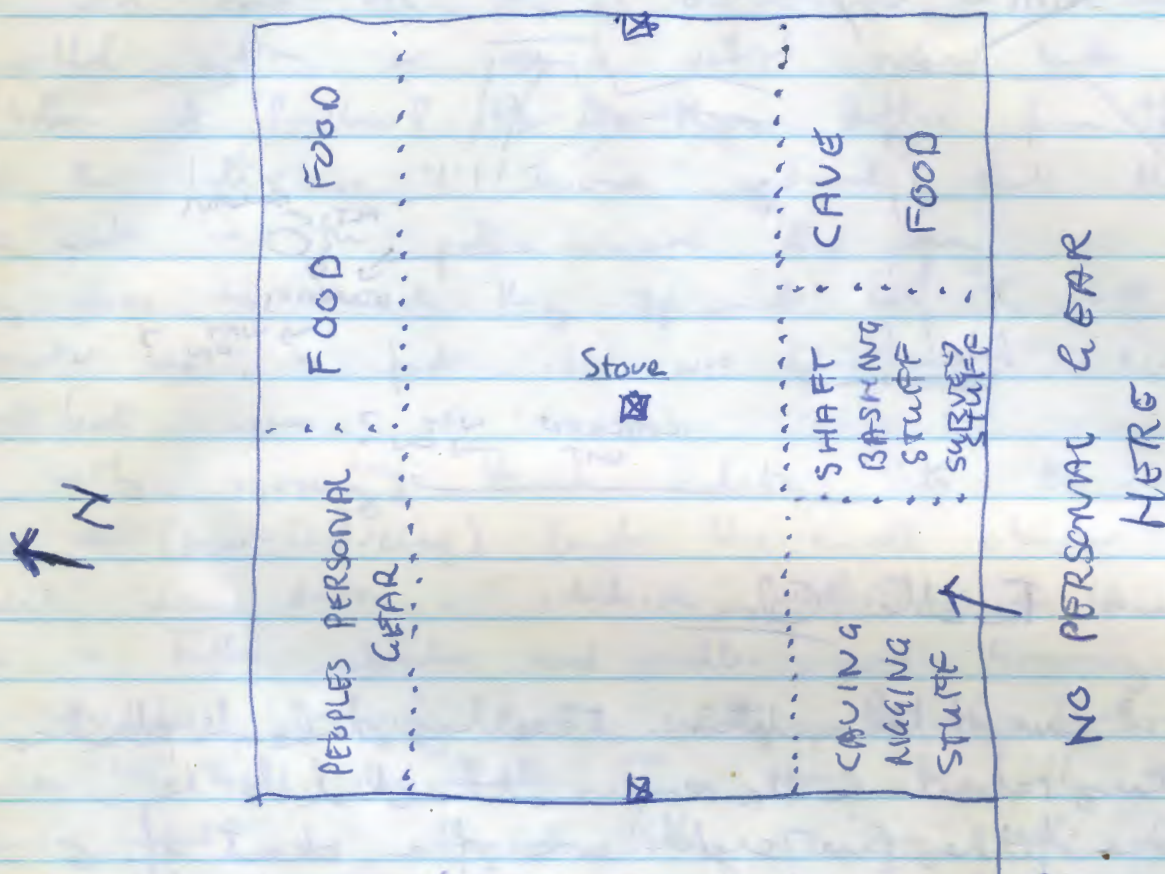
Gary re-arrived, so we surveyed from the top of Peanut Pitch to the end of Insalubrious Passage. The cream cheese moonmilk was wonderful. We left the two undesecded pitches undesecded, went out

1/2 hr 7 1/2 hrs
 fair hrs less for Fen.
 Chris

2/8/7

(56)

I have just been looking at the big tent. It is a mess. For those who don't know here is a plan to keep it tidy (ish) and to keep things where people can find them easily



In this way there is room for everything and gear can find stuff.

It is particularly important that personal gear is not dumped on top of other stuff - there is a large empty space at the moment to keep it in.

Done B.

8/11

Gavin, Steve, Chris

28/7/92

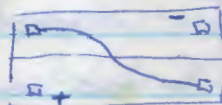
(57)

Finished surveying end of Salubrous, down ~~lower~~^{steeper} pitch, the next pitch. On into new stuff. While Gavin rigged, sloping pitch, Chris followed rift along from head of pitch. This continued for ~50m until a traverse across an 8m pitch would have been required to follow rift. Going down pitch Gavin had rigged, the rift continued up to point reached by Chris 8m above. Here was a junction - downstream* shortly was culled up, upstream went rapidly vertical. Returning back to ^{foot of} pitch rigged by Gav, a climb down led to a 4m pitch and a long stream passage (stream came in from left). Good draught too. Gavin & Chris followed this for maybe 100m to head of a pitch, & having had enough fun, by now went back to survey some of the days finds. This cave's really going to go!

* Upstream.

A long overdue note on using the RADIO.

The Arjo radio is powered from a 12V rechargable battery, a heavy white box.



Don't disconnect the black lead which joins 2 6 volt batteries in series. The connections have different terminals on + and - which correspond to the connections on the radio.

To keep the battery charged, it needs to be connected to the solar panel, which needs to face into the sun with no shadows. Connect (+) to (+) and (-) to (-). More technical people can use the multimeter set to Amps and 200mA to connect one wire. Ideally the battery should not be charged to over 13.8 volts.



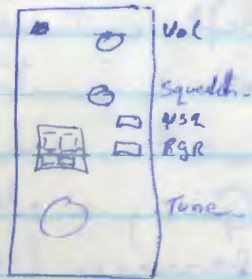
(50)

The battery should be disconnected overnight.

To use the radio you need 'almost line of sight' to Lagos which means standing on the path at the top of sed 4. The radio should work when plugged in, just press the button on the side of the mike to talk. Remember to make a long call when trying to make contact so people at base can recognise you.

If necessary, the controls on the base are Vol - on/off and volume.

Squelch - sets the level of signal at which the radio starts making a noise. to avoid noise when noise is talking to you.



VSQ. sets the squelch to RT signal or audio signal.

Tune - change the channels. Don't change the channel on other radio without telling the other radio what you are doing.

Sean

Over the last few days the fettle bag has become excessively full and full of holes. This irresponsible act has resulted in large quantities of fettle being spill all round the cave down. Even if the people at Aris are too busy caving to take part in the less attractive aspects of running an expedition they still have to be done. So use some common sense or we'll lose our permit and noone will be busy caving here ever again.

Shaft Bashing - Area E

Martin, Harvey, Chris

We walked over some green stuff and some grey stuff towards some sharp pointy stuff on the horizon. The bright yellow thing above us was very hot.

We had a look at a shaft on the side of La Rosa, labelled by Polifemo. Upon closer inspection it was seen to be

snow plugged. We had a look at a dig beyond the moraine in Vega Alizada. This has a superb draft - the entrance had an annoying ice blockage which we hit with rocks to no avail. A hammer & chisel would have been useful, rather than wasting time on this we headed off for area E, on the side of Verdelluenga. We ran around re-discovering OUCC numbers E6 - E10, & checking out various other unmarked holes (none of which went). E9 looks superb - close under the sub peak of Verdelluenga, the hole drops down to a snow plug, but a passage can be seen above boring its way straight into the mountain. In fact, it looked so good we left ~ 50m rope, 2 stops, a ladder wire belay in nearby F53 - so a return has to be made.

We come back, going past Tras la Hoyada to make a round trip. 100m from El Ilike Martin stopped & said: "well Harvey, do you know where we are?" Whereupon ~~we~~ ~~gave~~ ~~the~~ ~~reply~~ Harvey pointed towards the Central Massif & said "Oh, is that the white stuff near Arco?" Thankyou Chris, I love you too.

Sun 26th Harvey, Sam, Steve
 Harvey's 1st trip to 2/7

The trip up to 2/7 made a pleasant Sunday afternoon stroll. At last, after all these years of listening to conversations about the cave which every self respecting member of OUCC must know all about, I found myself staggering over the shattered rock to THE entrance. ~~[I should point out that the above letters were placed between everyone's gear from the rain that definitely wouldn't collect in the depression containing our camp, & p]~~

[I should point out that the writing of the above was punctuated by reserving everyone's gear from the rain which

(20)
definitely wouldn't collect in the depencians
containing our camp, and then preparing to
rescue the owners of the gear from 8/11.

Since they've now all come back I am continuing]
We ~~at~~ didn't actually get down the cave until
about 2-30 [Tim has just shattered my concentration
by pointing out that you get the most wonderful
boying after you've been using a carbide lamp]
I'm not really sure why this was. We left a little
late. Then it took us longer to walk there in the
midday sun with tackle than if we'd been running
after some superfit wonder-cave such as David's,
our most beloved leader. Then we spent a while
thinking up excuses for why we didn't get the
tackle bags down the cave, but didn't produce anything plausible.

Anyway, guided most efficiently by Sam &
Steve who are both jolly competent cavers, I had
a most enjoyable trip down to the pitch at Graham's
Todger and back. Martin will be most pleased to know
that we were ~~so~~ very careful with his photography
gear, the manouevring of which through the rift
all added to the interest. I must also compliment
Steve & Sam on their manouevring of a Harvey through
The Squeeze. Next time I shall follow Steve's
example & de-tackle. I'm afraid my arms & legs
soon get tired of attempting to move a jammed body
in an upwards direction.

Anyway, we got out about 11pm I think, ~~at~~
There were flashes of light from camp which seem
copied. This prompted his very sensible question: How
do you signal that everything's Ok? Perhaps we
~~should~~ should devise an appropriate ^{signal} ~~see~~. Well done to
Sam who navigated us home.

Harvey