

- ① 8/11 new northerly system via Mohandi, Pozo los Texas, Arnaedo, Joss de Lleña, Valle la Güelga to resurge at El Hoyo la Madre. This should be dye tested.
- ② Aris System linked with 1/4 → junction of Cabeza Muxa with 2/7. Combined system extended further to steep bit above Culiembro to deep shakehole with rift entrance & possible way on.
- ③ Possible high fossil system parallel to 2/7 detected from valley of Dry Bones area to possible fossil entrance in face of Cabeza Llambría, now eroded by Valle Extremo. This may have its own catchment in the Pico Guatutera region. Possible fossil exit for 2/7 main series seen in face of cliff (13/10).

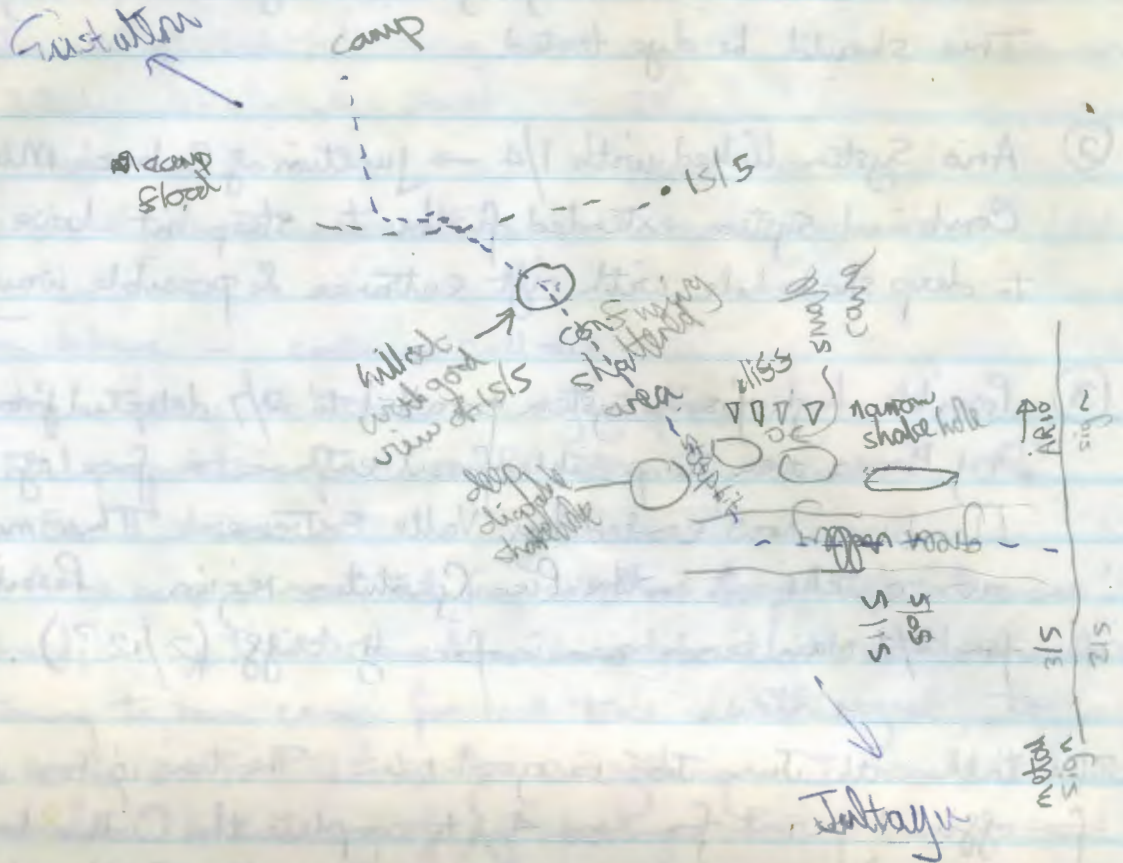
The talk with Juan José is good news. The time is now ripe to ask for official permit for Area 4 (to complete the Culiembro underground catchment) and for Area 11 (to complete the El Hoyo la Madre underground catchment, and to exploit 8/11). Another area of some interest is the massif bordered on W & N by Rio Cavaño, E by Rio Caves & S by Vega Maor. This has had little attention and has two major resurgences at Fuente Los Palvoras and Fuente Los Brazos. The area is accessible by tracks from the La Molina road head, or from Lagos → Belbain → Parros → Complengo Viejo. Complengo Viejo has water and could be a reasonable camp site (see Base Camp Log for detailed description of resurgences).

Well, I am very impressed by the competence of the team, and look forward to hearing of further remarkable discoveries. See you all at the BCRA Conference in Bradford 12/13.9.92. I hope all your photos & surveys come out OK by then. Bradford was my home town, now much changed and with a marked asian influx of peoples. This does mean, however, that there are several good asian restaurants in the area of Bradford University. See you there. Best wishes for future work.

John

(22)

Sketch Cut to Trea Path



30/7/92

Tina + Sam 8/11

- ① Dig through boulder chock at bottom of beam pitch to make connection down boulder slope and chise to very big chamber
- ② Surveyed 11 o'clock high, as far as high sloping chamber - which Sam had a look up.
- ③ Pushed through at right at junction up ramp at bottom of 3rd pitch - large patch pit probably connects to aren above 3-ways?

31/7/92. Tim + Dave H. 8/11

(73)

- ① Surveyed 11' o'clock high as far as draughting boulder chere (Draughting ~~into~~ our faces). Found a rodent (?) skeleton. Followed ~~up~~ down back under itself to pitch road probably a connecting inlet to the Dry Sump passage below. Chirbed above terrariums, but no lead. barely stat.
- ② Moved down low boulder chere in very big chamber - well decorated boulder slope leads to small stream flowing under low arch with nice terrariums + mud banks - don't spend it because it probably connects to nowhere novel.
- ③ Chirbed down "other way" at chirb above the crawl above front. Small chamber, with only exit to right, a too tight low draughting connection joining the crawl dead-end.

There's an undescended SIEO about 50m below 8/11.

NO draught. Slightly further down the valley on the W (left going down) side is a draughting entrance partially choked by boulders. In the bottom of the valley is a boulder pile possibly concealing something else (M 2/8/92)

F54

68° to top camp, ~ 50° M above, 30m to left (true right) of dolomite (?) band, ~ 150m left (true right) of F20 gully, at highest comfortable traverse level. 10m pitch to snow from where 2 20m shafts continue.

27.7.92
→ 31.7.92/
1.8.92

(74)

The Award Winning Photobrip

+ Pushing the wrong way in the right place.

Martin H
Dave B
Tony
Jonathan.

I was not looking forward to this one. I'd had a hard time in 1980. I was knackered and shagged and needed a rest. A long camp in 212 was not on the face the ideal way to achieve this. Not true. One year there you're knee, eat, sleep, sit, chat and do a little bit of carving, none of this long walks in followed by nasty surface clutter. As many factors, the trip down doesn't seem that bad; Poles, Pencils, Ruffs, Ribbles, Crank, Big Chamber, Sleep.

The first two days involved all four of us reaching for the stars and photographing Just Avenue in all its glory. A full extent of modern technology was ranged at the chamber to overcome such tricky problems as the inability to have anyone move this 10ft away. Short range radio and high powered flashlights were to be used, the one still held the day, but a couple of half decent jobs might have come out of it.

Martin and Dave took a while to get out prompting a rescue scene. Tony took me on a tourist trip to the Lincoln Underground, in exchange for letting him scan himself on a hairy climb. Sort of worthwhile in that we found an ^{infectious} ~~area~~ which was dated for about 100m, with a deathly count. Unfortunately a very good lead was ignored down the way. This is one of the most byzantine places to bypass by lead. Location top of ~~Drax~~ Postman Pat. Well with a assist. Rope up is descending iff, unexplained beyond the dirty rope.

SL

3-8-92

Chris & Tim

78

8/11

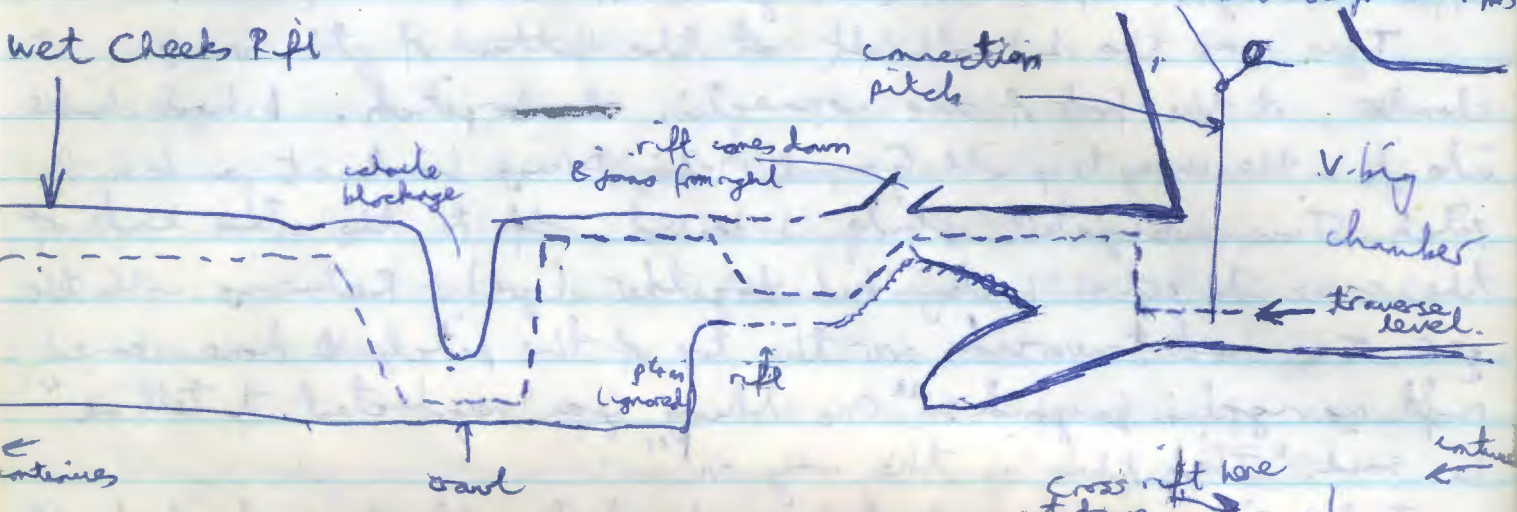
We had struggled up from the Lajos the night before. Neither of us had recovered from the illness that had started spontaneously after the false alarm rescue 2 nights before - but we were restless. The walk up was a continuous battle against nausea. Next day we pronounced ourselves fit & went off to survey / push / find the way on in 8/11.

This was the lateral rift at the bottom of the v-bug chamber, at the foot of the connection ~~pitch~~ pitch. I had climbed into it on the survey trip with Gavin & Martin, turning back at a 4m pitch. Tim investigated while I dashed off to the other end of the cave to get a botting kit together (gr). Returning with the gear, Tim had traversed over the top of the pitch & done some rift navigation beyond. "One thing you neglected to tell us" he said. "That this is the way on!"

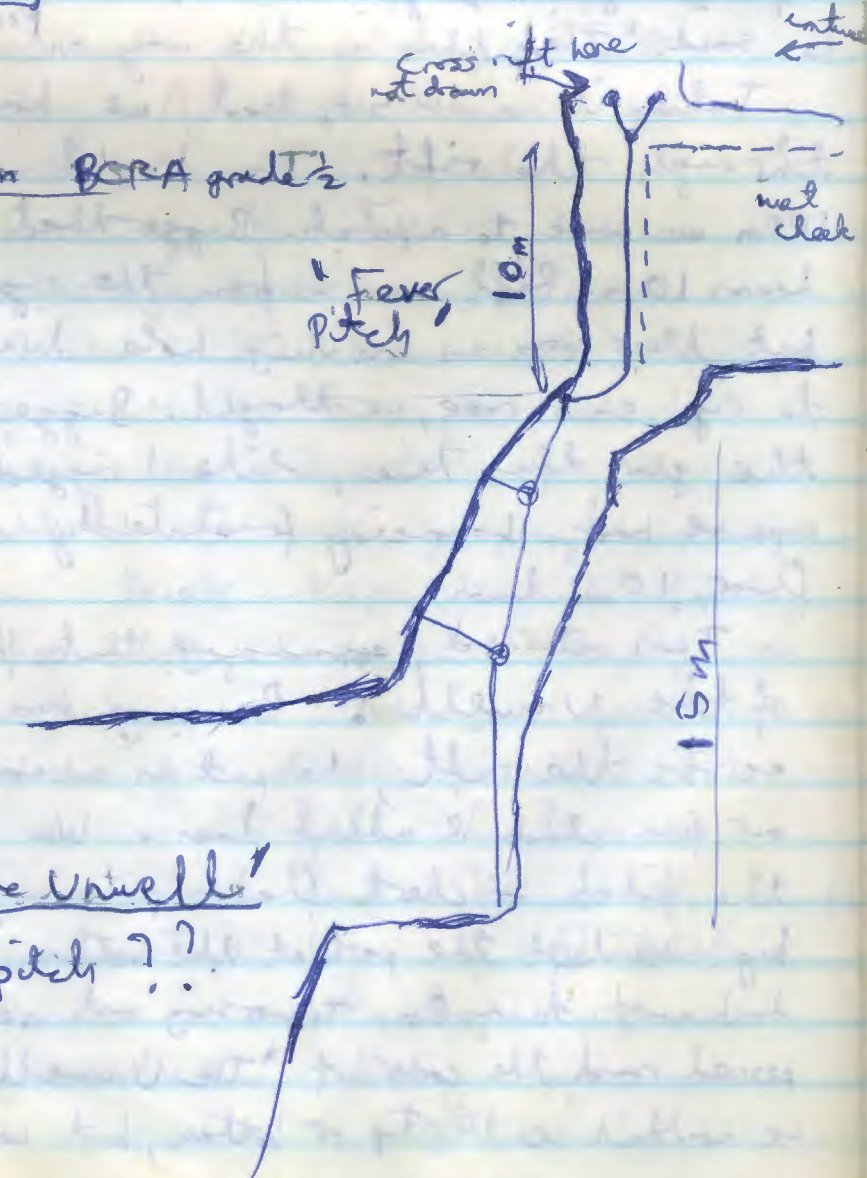
Taking it in turns to lead, we hocked off at a high level through the rift. The draught was oh so strong. After 50-100m we came to a pitch. Bigger than we thought, & free-climbed down 10m. Rift came in from the right, curved on to the left, but there was an inviting hole directly beneath us. Time to rig some rope, we thought. Bigger. Tim went back to fetch the gear this time, while I rigged the pitch with the poxy rope we had, bouncing frantically on the end 5m above the floor, 10m down.

Tim returned, announcing that he was still in 'the Area of the Unwell'. Bracing his lubricated buttocks across the rift, he put in a couple of bolts at the top of our free-climb & abbed down. We continued on to the bottom of the pitch - chert flakes protruding everywhere. It was getting big. We left the pool at the bottom, going to another pitch slope downwards to ~ 8m. Traversing out over the top of the pitch, we peered round the corner of 'The Unwell'. Ahead it was 3-4m wide, we couldn't see the top or bottom, but could still feel the draught.

(76) Time to do some surveying, we thought. Returning up 'Fever Pitches' & negotiating 'Wet Cheeks Rift' it became clear that we were no longer a competent party. Escal for Tim was slow & deliberate. But with an extreme effort, he managed to just about remember how to get out of the cave. Sounds of unwellbeing came down to me, but, surprisingly, that's what they remained - just sounds. The liquids came out later.



Extended elevation BORA grade 1/2



4/8/92

Dave L. and Pauline

(77)

49/5 'My little rabbit hole'

On one of our more festerous days we went for a short stroll from camp and I rediscovered 49/5. The main attraction in pushing it was its proximity to camp, lucky for me 'cause I forgot a sock and had to go back for it.

The Cave - a nasty mud slope leads to a pitch in a rift. This is the rift which you follow, gaining a couple of inlets. It is completely infuriating place, being ~~wide~~ relatively large in places then completely closing down round the corner.

From the bottom of the pitch you go along a few metres to where you can climb down in the rift. Two squeezes, one head first then one feet first go into a fault chamber where you meet the phreatic tube. ~~the~~ Following it downhill to a chamber with ^{two} 3-way junctions we found that it was possible to slide down along a ramp in the rift on the (L) to a small inlet chamber and then climb down further to a streamway. Hope ran high at this point. A squeeze gave us another 5m of small streamway, but stopped at an aven which I reckon (?) is the one mentioned in the shafting guide. Here it completely closed down: the water went through a small (10cm) hole ~~and~~ and an equally small rift stretched up to the roof 5m up. ^{There was also} A squeeze back into another inlet which can probably also be reached from above.

The phreatic tube slopes upwards from the chamber as the rift beneath it gets deeper and deeper.

(78)

It becomes sub-human size after 20-30m, and at this point the rift enlarges slightly, but is still narrow further down. We may be mad enough to hammer it.

In the passage before there is a climb down in the rift, which has a bolt for a handline at the top. We noticed the bolt after free climbing it. Dave pushed a squeeze when I told him that I could see big spaces by looking down ~~from above~~ ^{on} the next section or rift. The squeeze, 'Send Lawyers' squeeze, was both tight and awkward. I followed Dave. In many squeezes it is just a question of finding the right place to go through, but here I got really squashed. Amid cries of 'I ~~can't~~ can't do it, I don't fit' I did fit, but only just. We climbed down a hairpin bend to a corner, round which it became too constricted again. So we went out.

Dave liked this cave once he had found some really tight and awkward bits. I enjoyed finding the viles, and many albino snail shells.

It is a really epic place, and must go somewhere, because it draughts and echoes, and water can be heard flowing ahead.

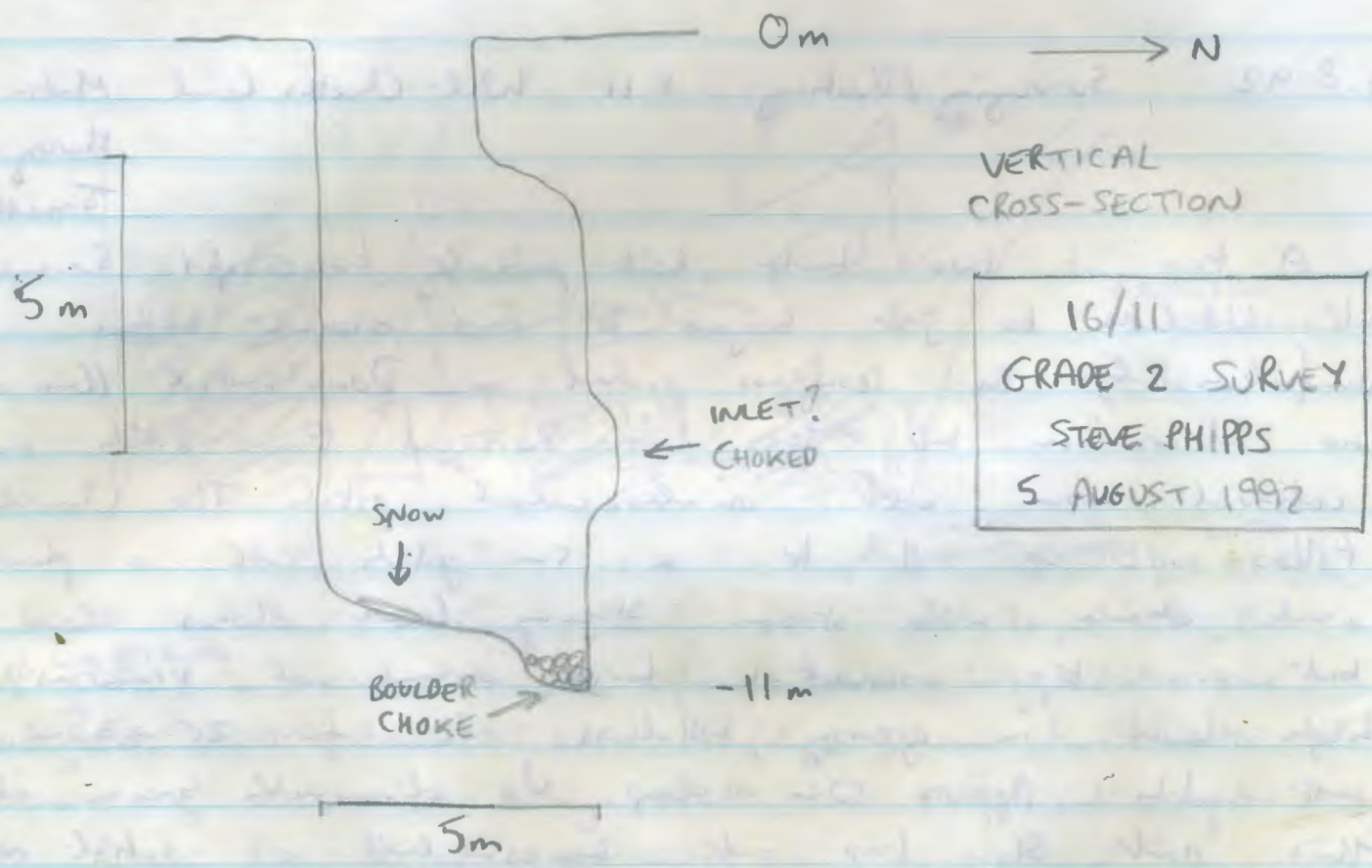
5/8/92

Sam, Steve

16/11

Feeling lethargic in the unfeasible heat of the afternoon, we decided to go for a short walk and check out this shaft which we noticed when shaft-bashing a few weeks earlier. Rigging two ladders off a hardy natural, we

descended optimistically, dreaming of discovering huge, stomping steamway. Needless to say, psychospelogenesis let us down and we discovered that the shaft chokes at the bottom, in a very definite and non-diggable fashion. It does not draught.



An improved description of the location of this cave is 'On the NE side of Cabeza la Forma, 5m N of the path leading to the Aris Refugio and on top of a small spur. The entrance is an obvious hole in the ground, approximately 2.5m x 1.5m. Bearings = Cabeza Indigua 101°, Cabeza la Forma 193°, Cabeza las Carfanas 345°.'

Our trip did at least accomplish 3 important things:
(1) We retrieved Gavin's map from our first visit

- (2) We brought some of the snow plug back with this for the benefit of those festering at camp.
- (3) We retrieved a water bottle from the spring on the way back.

By the way, this cave is not labelled in any way.

Steve

4.8.92 Surveying / Pushing 8.11 W/L Ueber's Crawl. Mark H
 Harry
 Jonathan.

A trip of two half, both partially successful. Surveyed into W/L Ueber's to job beyond to start crawl, before unfortunately the compass packed in. Doubtful there was no alternative but to push. Rezzed few Piths and continued down until descended pitch The Uwell. Follow rope up off, to a 5m pitch into a pleasantly good chamber with stream. Stream level closes down but over top encounters high over and traverses at high level in grassy, holdless rift for 20-30m to next pitch. Approx 10m deep. No discernible breeze at this point. Slow trip out necessitated a pitch rescue at surface. In very much too Chris + Tim.

Jonathan.

